



Welcome to the latest CAPHRI newsletter. Here's what you can look forward to in this issue:

- Announcement theme CAPHRI Research Day 2026
- Healthcare will always remain human, Professor Marieke Spreeuwenberg on Digital Transformation
- Expanding sun-safe environments to prevent skin cancer among young people
- Integrating environmental impact into healthcare decision-making
- Preventing mental health-related absenteeism through organisational advice
- Reducing Pressure on GP Care in the Eindhoven Region
- Green school playgrounds boost concentration and wellbeing
- Take charge of your career: professional development workshop
- Renewed guidelines on photo and video recording at FHML and FPN
- Annual Science Day 2026: call for abstracts
- Upcoming funding opportunities, courses, events, inaugural and farewell lectures, and PhD defences

Dive in and get inspired by the latest from our community. Enjoy the read!

CAPHRI Research Day

10 June 2026



Climate Health: Care for Climate, Care for Health
Research and Collaboration for Health and Well-being

CAPHRI Research Day 2026

CAPHRI News

The CAPHRI Research Day returns on Wednesday, 10 June 2026. This year, we are coming together at a new location: the Van der Valk Hotel Maastricht. The 2026 theme is: **Climate Health: Care for Climate, Care for Health. Research and Collaboration for Health and Well-being.**

What role does research play in mitigating the health risks of a changing climate? And how can we collaborate to ensure well-being in an era of environmental transition? During this CAPHRI Research Day, we dive into the vital connection between planetary health and human care. Join us as we explore how our collective scientific efforts can protect both the environment and our population's health. Together, we will discover how caring for our climate provides the essential foundation for the future of healthcare.

Mark your calendar and join us for this inspiring day of knowledge exchange, discussion, and innovation. A versatile programme awaits, including interactive sessions, PhD poster presentations, and workshops. Further details about the programme will follow shortly!



Healthcare will always remain human

CAPHRI News

With healthcare facing unprecedented pressures, the need for digital and data-driven technologies has never been more urgent. Professor Marieke Spreeuwenberg (VHC) is supporting organisations in becoming future-proof through her chair in Healthcare Innovation and Digital Transformation. Her work focuses on four central themes: the co-creation of technology with end users, personalised care through AI, shaping digital strategies within organisations, and ensuring digital inclusion.

Spreeuwenberg is convinced that digital healthcare will lead to more efficient care, reduced workloads, and greater patient control. Her team is currently active in embedding technology

directly into care pathways, developing hybrid models that combine digital and physical care. This includes innovative projects such as voice-recognition apps for COPD detection and AI prediction models for cardiovascular conditions.

A vital element of her mission is digital inclusion, addressing the needs of the estimated 15% of people who struggle to keep up. Through programmes like Digitaal Mee in de Zorg, she works to ensure that digitalisation does not widen the gap between those who can and cannot participate. While she expects AI and hybrid care to play a major role in the coming years, she remains clear: "It won't be a fully robot-controlled hospital. Healthcare will always remain human."

[Read the full article here](#)

Expanding sun-safe environments to prevent skin cancer among young people

CAPHRI News

A newly funded ZonMw project, led by Dr. Francine Schneider and Dr. Liesbeth van Osch (PHPC), is focussed on skin cancer prevention, which is one of the fastest growing types of cancer in the Netherlands. However, this type of cancer is largely preventable by promoting sun protective behaviour and creating sun safe and friendly environments. In this project, building on the successful integrated skin cancer prevention strategy in Fryslân for children up to 12 years - geZOND -, they aim to further expand and upscale this strategy to adolescents and young adults. The approach will combine education, environmental adaptations (such as shade and sunscreen provision), and policy development. A crucial elements of the project is the active involvement of young people in shaping the intervention and its implementation. In close collaboration between Maastricht University, GGD Fryslân, and regional partners, the project also generates practical tools and knowledge to support implementation in other regions.



Dr. Francine Schneider



Dr. Liesbeth van Osch



Integrating environmental impact into healthcare decision-making

CAPHRI News

Two new ZonMw grants have been awarded to projects that address the environmental impact of healthcare and its role in decision-making about care and reimbursement. While healthcare is essential for our well-being, it also contributes to environmental challenges such as CO₂ emissions, waste, and high energy use. These projects aim to support more sustainable and socially supported healthcare choices.

The project of Dr. Ghislaine van Mastrigt (VHC) and CAPHRI colleagues, responds to the lack of clear guidance on how to include environmental impact in economic evaluations of healthcare. The project will develop a practical framework and checklist to support policymakers, researchers, and healthcare organisations in making transparent

and consistent decisions. These tools will be co-created with experts and stakeholders and tested using real-world case examples.

Dr. Merel Kimman, Prof. Manuela Joore and their team (VHC) will focus on societal perspectives. In their project, they will examine how patients, citizens, healthcare professionals, and policymakers value environmental impact relative to health outcomes and healthcare costs, using interviews and a large-scale survey to inform future policy decisions.



Preventing mental health-related absenteeism through organisational advice

CAPHRI News

A newly funded ZonMw project, led by Prof. Angelique de Rijk (HISP), focuses on preventing sickness absence due to work-related mental health problems in the healthcare sector. Many employees experience psychological complaints linked to their work, and occupational physicians play a key role in addressing these issues at an organisational level.

In this project, two practical tools are developed to support occupational physicians in providing organisational advice when early signals arise, such as psychological strain identified during preventive consultations or sickness absence due to mental health complaints. The tools are developed based on literature and research, refined through focus groups, and tested through action research within Maastricht UMC+ and several other organisations.

The project aims to strengthen occupational physicians in their advisory and preventive role, support timely action by managers, and improve employees' mental health, ultimately reducing sickness absence and unhealthy working conditions.



Reducing Pressure on GP Care in the Eindhoven Region

[CAPHRI News](#)

Thisisarts and primary care organisation Stroomcz are working together to reduce pressure on GP care in the Eindhoven region by giving residents more control over their health. Thisisarts offers reliable, GP-approved health information that residents can consult before visiting their doctor, helping to prevent unnecessary consultations and easing the workload for healthcare professionals. The initiative is supported by health insurers CZ and VGZ and funded with €3.6 million from the Dutch Ministry of Health. CAPHRI researchers Prof. Jochen Cals (OPC) and Dr. Ralph Leijenaar (OPC/PHPC) are responsible for developing the measurement framework and carrying out the scientific evaluation of the transformation plan, assessing its impact on healthcare use, workload and residents' quality of life.



Green school playgrounds boost concentration and wellbeing

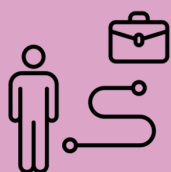
[CAPHRI News](#)

Recent findings from The Healthy Primary School of the Future project reveal that greening school playgrounds is a highly effective way to enhance children's health and cognitive performance. A collaborative pilot study between CAPHRI and Hasselt University shows that exposure to nature significantly improves concentration, attention, and social behaviour among pupils.

The research indicates that children at schools with green playgrounds are not only more physically active but also show improved learning outcomes. Bo van Engelen (OPC) explains: "Our study shows that greening school playgrounds not only encourages children to be more physically active, but also improves their attention and social behaviour. What's more, cost-benefit analysis shows that greening playgrounds is a highly cost-effective way to promote children's health and wellbeing."

This cross-border collaboration, supported by provincial authorities in both the Netherlands and Belgium, highlights the measurable benefits of integrating nature into the school environment. By combining the healthy primary school concept with green spaces, schools can provide a vital foundation for both the wellbeing and academic success of their students.

[Read the full article here](#)



Regisseer je eigen loopbaan

Take charge of your career: professional development workshop

[Talent development](#)

Are you looking to align your professional path with your personal strengths? CAPHRI PhD Candidates are invited to join an intensive, two-day workshop designed to help you discover and develop your professional self.

Day 1 focuses on your personal profile: identifying what drives you and where your talents lie. You will learn to summarise your unique value into a powerful elevator pitch.

Day 2 shifts toward action, translating your career desires into concrete scenarios and networking strategies. You will create a step-by-step plan and practice interview techniques to ensure you stay in the driver's seat of your career.

Collaborating with peers from across Maastricht University, you will learn through practical examples and recent theory. Please note that this workshop is free of charge and will be conducted **in Dutch**. Preparatory assignments are required for both days.

You can [register via this link](#). After logging in to SuccessFactors, please follow these steps:

1. Navigate to Learning (Studieactiviteit).
2. Go to the Learning Catalog (Leeraanbod).
3. Search for and select the training:
'Regisseeer je eigen loopbaan' (Take charge of your career).
4. Simply click on 'create lesson request' and enter March/April for the required date.



Photo and video recording at FHML and FPN

[UM News](#)

Within FHML and FPN, photographs and videos are regularly taken, for example for communication, education or media purposes. To ensure that this is done safely, carefully and in line with the applicable agreements, several guidelines apply.

[Read the guidelines here](#)

For questions regarding FHML, please contact communicatie-fhml@maastrichtuniversity.nl. For FPN, please contact contact-fpn@maastrichtuniversity.nl.

Call for abstracts
Arts-assistenten Vereniging & Centrale Opleidingscommissie MUMC+

Voor: A(N)IOS, Arts-onderzoekers, studenten
Waar: Terras niveau 4, MUMC+, 12:00 - 14:00 uur
Deadline Abstracts: **1 maart 2026**

Prijzengeld: 2000 euro

Wetenschapsdag MUMC+
8 april 2026

Submissions
Vormvereisten: Maximaal 300 woorden, voertaal: Engels
Title, Authors, Background, Objective(s), Methods, Results, Conclusion

<https://tinyurl.com/wetenschapsdag2026>

AAV MUMC Maastricht UMC+

Annual Science Day 2026: call for abstracts

MUMC+ News

The annual Science Day (Wetenschapsdag) returns on Wednesday, 8 April 2026, from 12:00 to 14:00 at Terrace Level 4 of the Maastricht UMC+. This event offers a unique opportunity to present your research to a jury of specialists from diverse backgrounds and compete for a share of the total prize fund, which has been increased this year to €2,000.

All physician-researchers, residents (ANIOS/AIOS), students, and PhD candidates are encouraged to participate. Research projects in their early stages are also highly welcome.

Submission Guidelines

Deadline: 1 March 2026, 23:59.

Format: English, maximum 300 words.

Structure: Title, authors (with affiliations), background, objective(s), methods, results, and conclusion.

All participants will present their research via a poster and should prepare a short pitch for the jury. For any questions, please contact the organisation at wetenschapsdagaav@gmail.com. We look forward to seeing your abstracts and welcoming you on 8 April!

[Apply now!](#)



CAPHRI Funding

Streamlined access to research funding opportunities

Researchers can access an extensive overview of national and European fellowships, health funds, and mobility grants on UMPLOYEE. For tailored searches, Research Connect is available through individual UM/MUMC+ accounts. To stay up to date with calls, deadlines, and training opportunities, join the [FHML/MUMC+ Research Funding Support group](#) on UMPLOYEE. This group provides weekly updates, ensuring you never miss relevant funding news.

[Visit the UMPLOYEE Funding Page](#)

This is your Call

Upcoming funding opportunities

Studio Europa Research calls

Studio Europa Maastricht (SEM) is accepting applications for two research calls designed to support interdisciplinary, Europe-focused research and outreach initiatives. The calls are open to researchers from all faculties of Maastricht University (UM).



The aim is to:

- Foster interdisciplinary collaboration in support of the UM research agenda on Europe.
- Ensure UM's expertise on Europe informs and engages societal and policy stakeholders.

Researchers at all career levels to apply, but lead applicants should be assistant, associate, or full professors. Research teams may include PhD candidates, postdoctoral researchers or other UM research staff. Lead applicants may submit one application per call round, but co-applicants and external partners may participate in multiple proposals.

Call 1: Interdisciplinary research projects

With this call, Studio Europa supports researchers from at least two faculties who wish to conduct high-quality research on Europe and European themes. Projects should:

1. Address one or more topics in the UM research agenda on Europe;
2. Foster collaboration across UM faculties; and
3. Lead to tangible academic output (for example an article prepared for submission to a peer-reviewed journal)

Applicants may also use the grant to lay the groundwork for a larger research or funding application.

Max. amount of funding: €10,000 per project

Deadline 2026: 2 March 2026 (midnight)

Call 2: Academic events and outreach activities

With this call, Studio Europa supports researchers from at least two faculties who wish to organise:

1. An interdisciplinary academic event (for example a workshop, symposium or conference) within the thematic scope of the interfaculty research agenda on Europe; or
2. Outreach initiatives that translate academic expertise on European themes to societal or policy audiences. Projects may involve external stakeholders.

Max. amount of funding: €5,000 per project.

There are two rounds per year

More information on research calls of Studio Europa Maastricht

Hanarth Fonds

1. Research project

Funding for a project in which artificial intelligence algorithms are developed and/or applied to data sets to gain greater insight into the clinical, pathological, molecular, or imaging characteristics of tumors and treatment outcomes. This insight has the potential to improve outcomes for patients with very rare forms of cancer through improved early detection and the development or improvement of therapeutic strategies, for example, through personalized dynamic predictive models.

Applications in the field of machine learning include, among many others, artificial neural networks, decision tree algorithms, support vector machines, probabilistic networks, or rule-based systems. The data sets to be used can include molecular and non-medical data, imaging data, patient information forms from the medical record, or data from a registry. Project proposals for implementation research are also welcome.

Max. amount of funding: up to €500,000 per research project for 2-4 years

Deadline: March 12, 2026, for the pre-application

2. Fellowship

Funding for a specific training program that recognizes the added

value of applying machine learning to research, daily clinical practice, and organizational processes. The training program could include courses on the topic, further training in advanced statistical topics, or an internship at an institute renowned for its machine learning research.

Budget: up to €250,000 for a maximum of 2 years.

Deadline: June 11, 2026 14:00 uur

[More information on Hanarth Fonds](#)

[Save the date and register](#)

Events and courses

Conferentie 10 Jaar Gezonde Basisschool van de Toekomst

March 12, 2026

Nationale Biobanken & Collectiesdag 2026 - Utrecht

March 19, 2026

- [Click to explore the details](#)

Science Day - Maastricht

April 8, 2026

Public Health Strategy Seminar October June 2026 - Salzburg

June 28 - July 4, 2026

Application Deadline: January 31, 2026

- [Click to explore the details](#)

CAPHRI Research Day 2026 - Maastricht

June 10, 2026

**Symposium Living Lab Ageing and Long-Term Care Limburg -
Roermond**

June 18, 2026

Symposium Living Lab Rehabilitation

June 24, 2026

[Save the date and register](#)

Inaugural lectures and farewells

Farewell symposium Prof. dr. Klasien Horstman - Maastricht

27 February 2026

Farewell symposium Prof. dr. IJmert Kant

13 March 2026



Farewell symposium Prof. dr. Paul Savelkoul - Maastricht

5 June 2026

Farewell symposium Prof. dr. Onno van Schayck - Maastricht

11 June 2026

Inaugural Lecture Prof. dr. Mickael Hiligsmann - Maastricht

2 October 2026

Inaugural Lecture Prof. dr. Judith Meijers - Maastricht

20 November 2026

PhD Ceremonies

January and February 2026

Nana Chea Hankalo | OPC

12-01-2026

"Undernutrition among pregnant women in rural Ethiopia: prevalence, determinants, challenges and utility of couples' forum to tackle maternal undernutrition"

Tegene Legese Dadi | OPC

12-01-2026

"Enhancing Self-management of HIV Patients in Low- and Middle-Income Countries: Development and Validation of a Comprehensive Self-management Questionnaire"

-

Robin de Bot | FPR

14-01-2026

"The clinical and biomechanical implications of hallux rigidus and related surgical interventions on gait"

Olga Temina | HISP

27-01-2026

"Invisible and indispensable: Patients' practices of co-constructing care for oncological and rare diseases in Russia"

Javier Castaneda Rojas | OPC

27-01-2026

"Assessment of Automated Insulin Delivery and Continuous Glucose Monitoring Targets in Type 1 Diabetes Care"

Lisa Affengruber | PHPC

03-02-2026

"Speeding Ahead: Exploration and Further Development of Rapid Review Methods"

Frank van de Baan | VHC

06-02-2026



*Good luck and congratulations
to the CAPHRI PhD's*

"They're only human after all: Examining the central role of staff in hospitals' response to dynamic environments"

Michiel de Graaff | VHC

09-02-2026

"Who cares? Navigating gender roles and expectations in care and support for people with dementia"

Isabelle Wiethoff | VHC

10-02-2026

"Beyond the Heartbeat: An Evaluation of Quality of Life, Societal Costs, and Cost-Effectiveness in Inheritable Cardiomyopathies"

Communication

Your project, publication or event in this newsletter?

Have you recently contributed to a podcast, given an interview, or presented at a conference? Reached a significant milestone in your research? Perhaps you're organizing an event or have an exciting project in the pipeline?

Contact us to explore opportunities for featuring your work on our social media channels and in our newsletter. Let's collaborate to amplify your voice and celebrate your successes within our international academic community

Please note: you cannot reply to this email. For questions, newsletter topics, ideas, announcements, feedback and more please email info-caphri@maastrichtuniversity.nl.



Maastricht University



Maastricht UMC+



©2026 - Maastricht University