

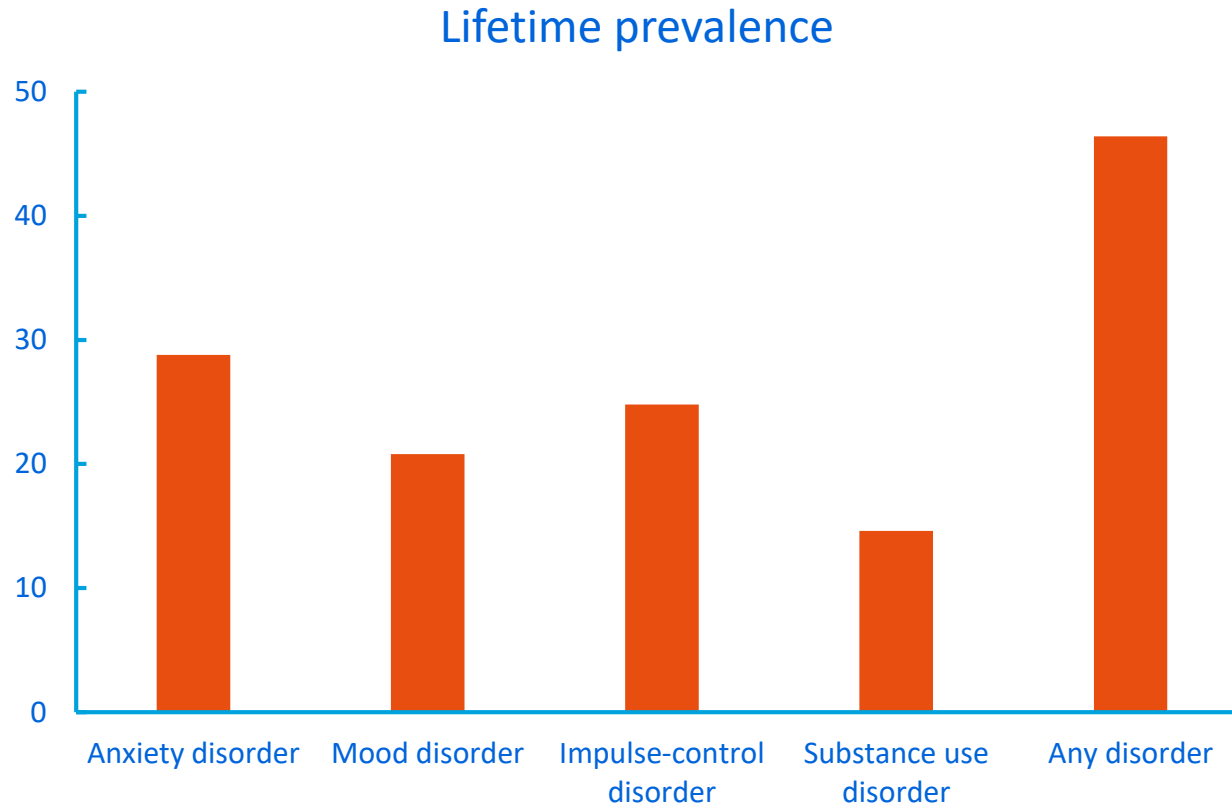
Research Master in Cognitive and Clinical Neuroscience Specialisation Psychopathology

Anne Roefs
Specialisation PP coordinator

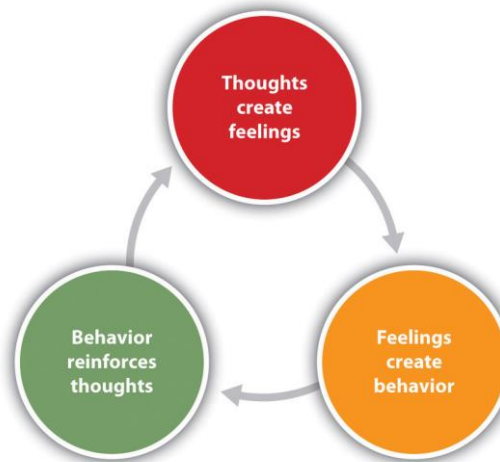
March 24, 2018



Why study psychopathology?

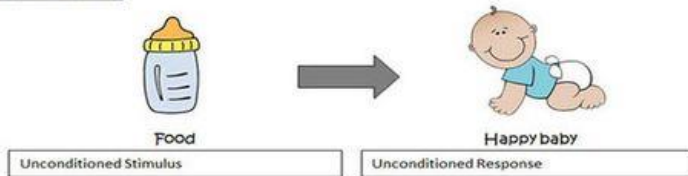


What are the underlying causes?

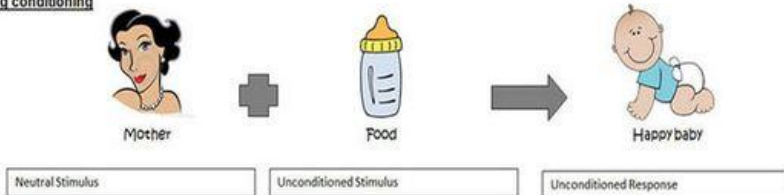


Attachment by Classical Conditioning

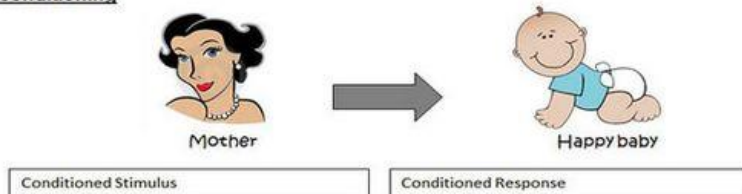
1. Before conditioning



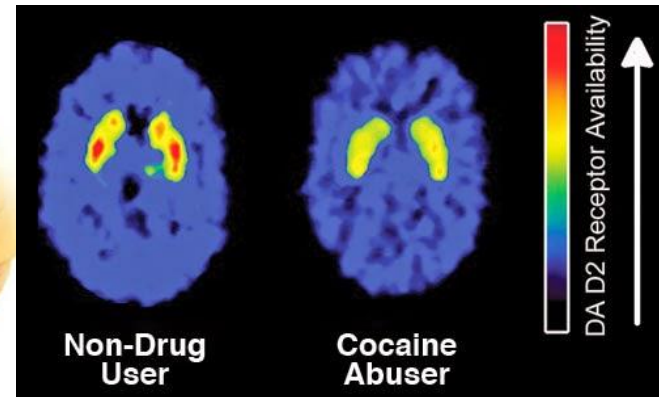
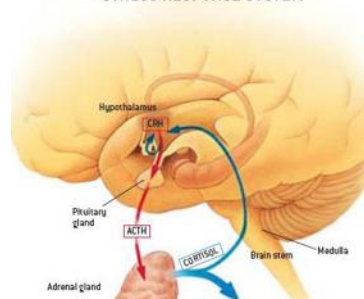
2. During conditioning



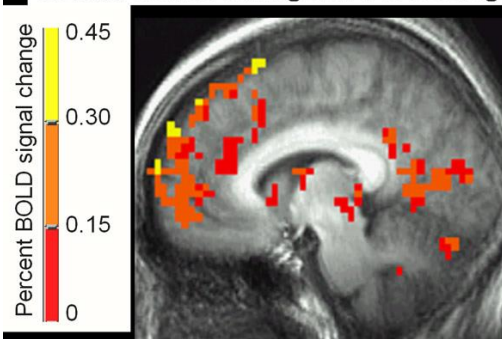
3. After conditioning



STRESS RESPONSE SYSTEM

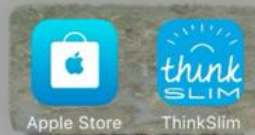


Social Phobics During Self-Processing





MECHANISMS LAB



NEW INTERVENTIONS



North America

09:30 – 17:30

CBT for eating disorders: brighten up the basics

A. (Anita) Jansen, S. (Sandra) Mulkens

MENTAL HEALTH CARE



LONTE

Recent publiceerden Anita Jansen en Sandra Mulkens twee Nederlandstalige i-books ("leren om niet te eten"; LONTE) voor behandelaars in de gezondheidszorg. De boeken staan vol filmfragmenten die het gebruik van cognitieve- en gedragstechnieken voor de behandeling van obesitas demonstreren.

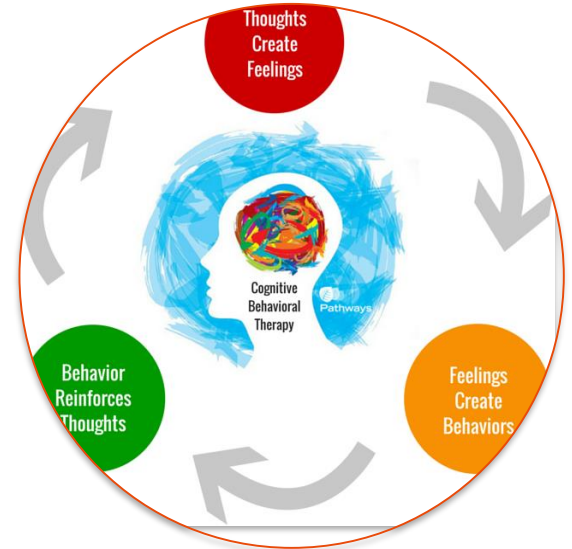
LONTE Boek 1 (iTunes)

LONTE Boek 2 (iTunes)

www.lonte.org



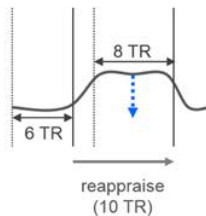
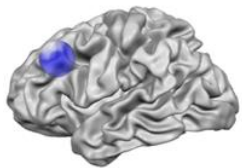
Which treatments work, for whom, and why?



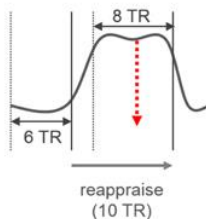
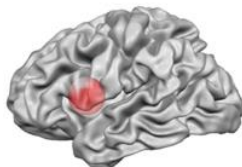
Region

BOLD PSC

Thermometer display

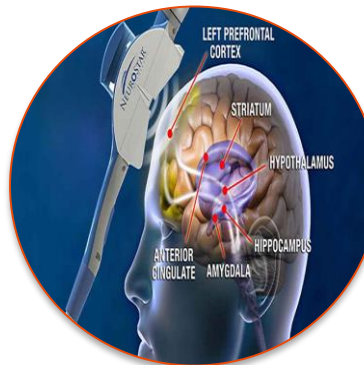


dlPFC
"indicates reappraisal thoughts"



insula
"indicates anxiety"

(1 TR = 1.25 s)



THE HAPPINESS OF
YOUR LIFE DEPENDS
UPON THE QUALITY
OF YOUR THOUGHTS

Core courses

- Current theories, research approaches, and clinical applications in all major disorders
- 4-week interactive seminars led by international experts in their fields
- Grades based mainly on papers, research proposals, presentations





Anxiety Disorders



Bodily Distress Disorders



Psychosis



Mood Disorders



Developmental Psychopathology



Mental Health & Happiness



Stress & Trauma



Eating Disorders



Personality Disorders

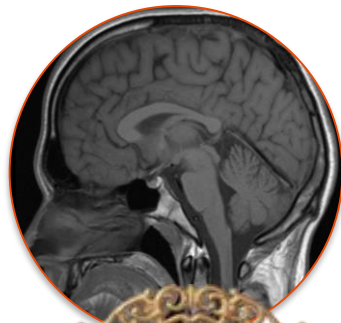
C
o
r
e

C
o
u
r
s
e
s

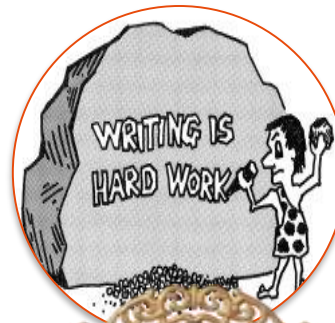
Statistics, workshops and skills



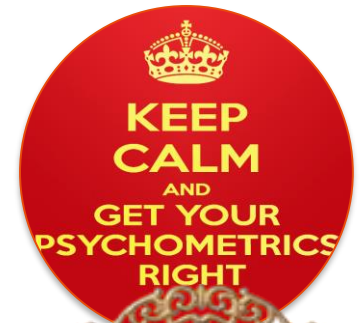
Statistics



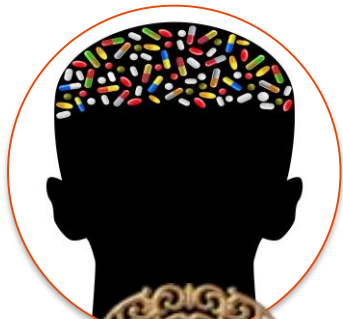
Neuroanatomy | Neuroimaging



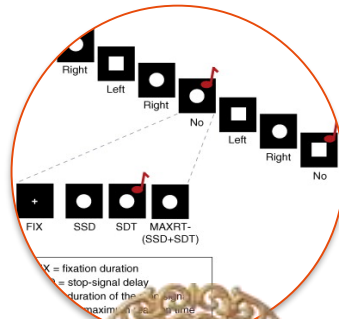
Scientific writing



Psychometrics



Psychopharmacology



Cognitive research methods



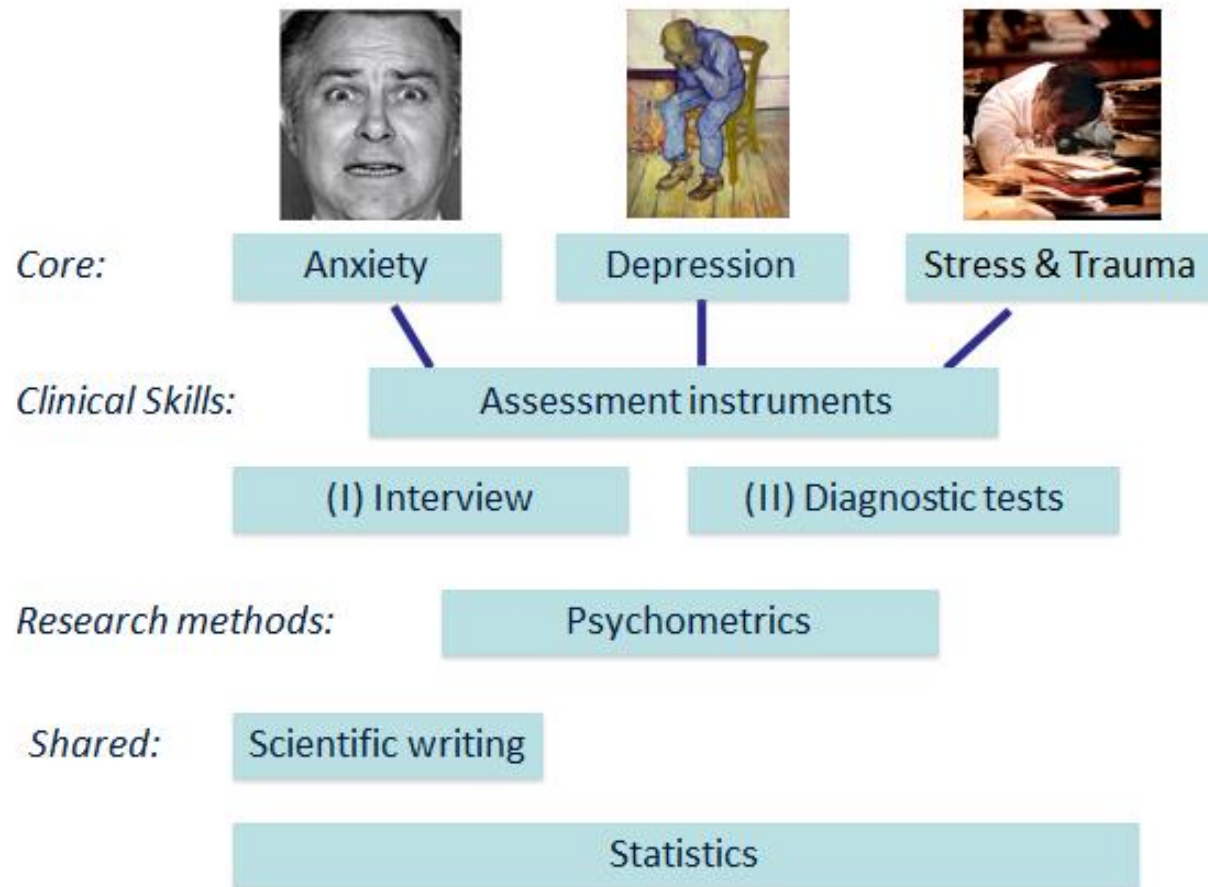
Epidemiology



Clinical (research) skills

Courses are integrated into a coherent programme

Programme until christmas...



Clinical aspects

- In curriculum:
 - Interviewing skills
 - Diagnostic and test procedures
 - Basic interventions
- Optional clinical internship (includes research)
- Preparation for scientist-practitioner career
 - Curriculum accredited for Dutch clinical programmes
 - Certification (GZ/LOGO, BAPD) possible



Internships

- Research (master's thesis): *19 or 32 weeks*
- Clinical (minor's thesis): *13 weeks*
- At the UM or...
- Excellent institutions worldwide via rich network of international collaborations



Career paths

- PhD training
- Clinical training
- Combination PhD and clinical training

For more information:

- Visit admissions and RM track representatives at the information market today.

- Join the Q & A sessions this afternoon.

- Contact the Research Master Front Desk:

researchmaster-fpn@maastrichtuniversity.nl

- Visit our website:

<https://www.maastrichtuniversity.nl/education/master/research-master-cognitive-and-clinical-neuroscience-specialisation-psychopathology>



The screenshot displays the website for the Research Master in Cognitive and Clinical Neuroscience, specifically the Psychopathology specialisation. The page features a navigation bar with links to Education, Research, Life@UM, News & events, About UM, and Support. A sidebar on the left lists various program details. The main content area includes a 'Fast facts' section with bullet points highlighting the program's benefits, such as optimal preparation for a PhD, close interaction with senior researchers, and a research internship. A green button at the bottom right encourages users to 'Apply now!'.

Education Research Life@UM News & events About UM Support MyUM

... / Education / Master's / Psychopathology Find another programme

Master
♦ Faculty of Psychology and Neuroscience
Research Master in Cognitive and Clinical Neuroscience

Psychopathology

Are you intrigued by the complexities of the wide range of mental disorders? Are you eager to develop the knowledge and research skills needed to understand how such disorders come about and to find new ways of treating and preventing them? Then Psychopathology is the right choice for you! This highly multidisciplinary programme provides you with the theoretical background and clinical insight necessary for research in the fields of experimental psychopathology, clinical psychology and psychiatry. Psychopathology is also an ideal choice for those who intend in the future to combine science and clinical practice.

Fast facts

- optimal preparation to pursue a PhD degree in Clinical Psychology or a related field
- close interaction with senior researchers who are experts in their fields
- research internship and optional clinical internship here or abroad
- 2-year, full-time master's, taught in English
- starts in September, selective admission (maximum enrolment 20 new students each year)
- you'll get an MSc in Cognitive and Clinical Neuroscience

You can only apply for 1 specialisation.
Apply now!