

MSc Economic & Financial Research

Maastricht University, School of Business and Economics





Martin Strobel

Today's Agenda

1

What are we about?

2

Our Program

3

Learning Environment

4

Student Profile

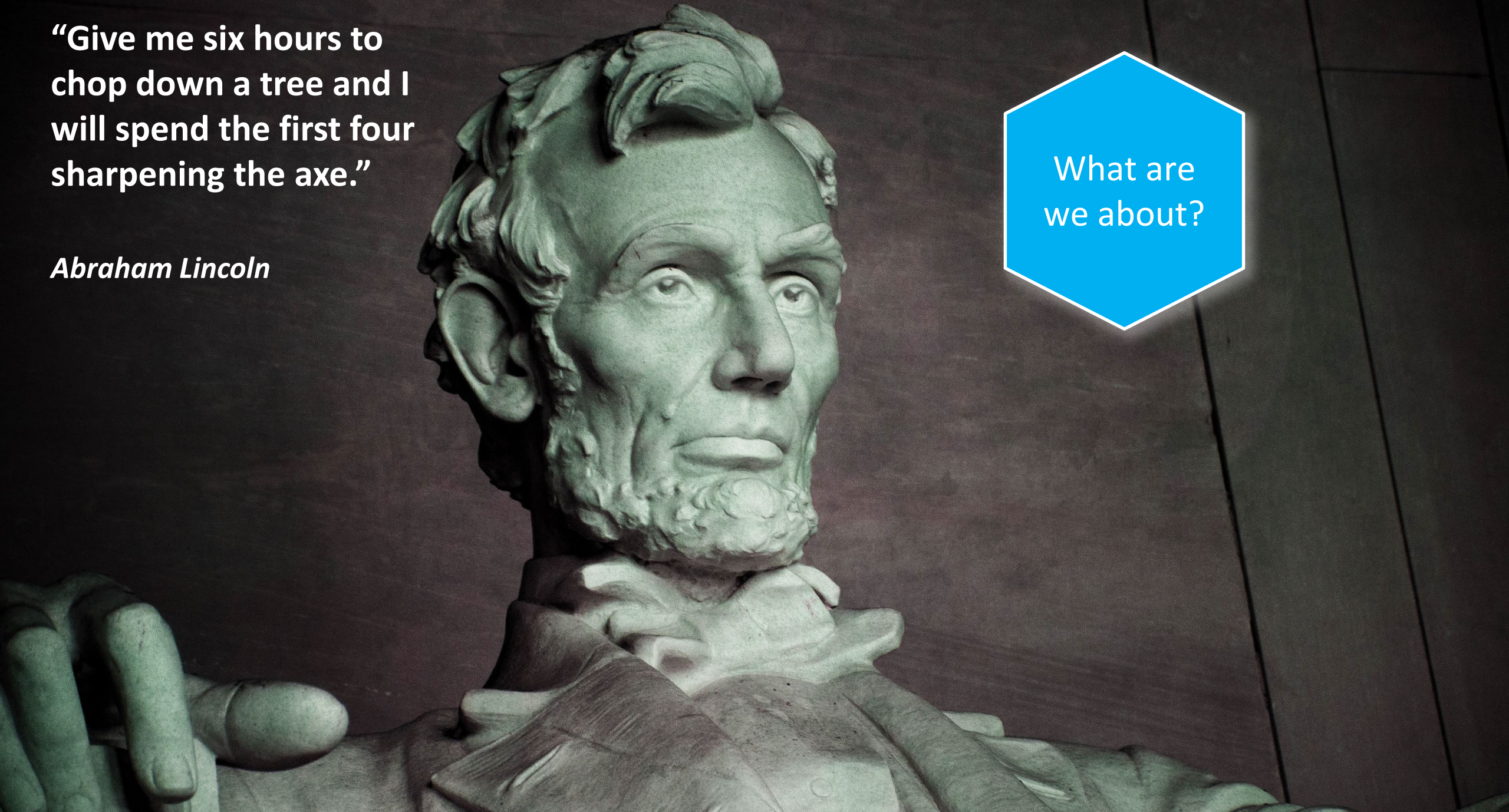
5

What does the future hold?

**“Give me six hours to
chop down a tree and I
will spend the first four
sharpening the axe.”**

Abraham Lincoln

What are
we about?



Research Master Program

- Two-year Master degree programmes
- Strong focus on research and science-related skills
- Provides you with the appropriate toolbox to tackle a PhD





Our
Program

Year 1	Period	Courses	
	1	Mathematical Research Tools	Empirical Econometrics 1
	2	Microeconomics 1	Macroeconomics
	3	Computational Econometrics	
	4	Microeconomics 2	Financial Markets
	5	Empirical Econometrics 2	Research Strategy
	6	Experimental Economic Methods	
		World of Research	

Year 2

Period	Courses	
1	Elective Course	Elective Course
2	Elective Course	Elective Course
3	Presentation Skills	
4	Master's Thesis	
5		
6		

Electives Year 2

(Some examples)



Behavioural Economics (EFR)



Industrial Organisation and Public Economics



Capita Selecta Economic and Financial Research



Equilibrium Theory and Financial Markets



High-Dimensional Econometric Methods for Big Data



18 others at the SBE and many more outside!

Special Econometrics Track

Start September Year 1			
1	Stochastic Processes (EBC4004)	Game Theory and Optimisation (EBC4188) <i>or</i> Elective** <i>or</i> Core Course	World of Research EFR (EBS4032)*
2	Time Series and Dynamic Econometrics (EBC4008) <i>or</i> Social Choice Theory (EBC4005)	Elective** <i>or</i> Core Course	
3	Topics in Computational Econometrics (EBS4007)*		
4	Econometric Methods for Cross Sectional and Panel Data (EBC4006) <i>or</i> Industrial Economics (EBC4007)	Elective** <i>or</i> Core Course	
5	Empirical Analysis of Financial Market (EBC4010) <i>or</i> Equilibrium Theory and Financial markets (EBC4009)	Elective** <i>or</i> Core Course	
6			

* Compulsory skills trainings within the EFR Econometrics specialisation.
 ** Choice from EFR elective courses

A group of students are sitting around a wooden table in a study session. In the foreground, a person's legs in blue jeans and a grey sweater are visible. Another person is holding a laptop. On the table, there are papers with diagrams, a green mug, and a container of markers. A blue hexagon with the text 'Academic Environment' is overlaid on the image.

Academic Environment

Academic Environment

- Seminar series in our research areas.
- GSBE sponsored workshops and conferences (*free of charge*)
- Courses at other faculties or other universities possible





Excellent Research Facilities

Financial Issues

- Teaching assistantship in the first year
- Research assistantships in the second year
- PhD positions (*competitive*)





Student
Profile




Curious & Academic Minds



Not afraid of using analytical
techniques, tools and math



Want to keep good options
for a PhD

A large group of graduates in black gowns and caps are gathered on the steps of a brick building. They are all looking upwards and throwing their caps into the air, creating a dynamic scene of celebration. The caps are black with blue tassels. The building behind them has arched windows and a large arched entrance. The sky is overcast.

What does
the future
hold?

Career Options

- Academia (PhD at SBE or elsewhere)
- Research-related positions in private industry (banks and consulting)
- Policy-oriented positions governments and governmental institutes (oversight authorities and think tanks)



Questions?

For contact:

gsbe-sbe@maastrichtuniversity.nl

Or visit us at the information
market in the Mensa

