

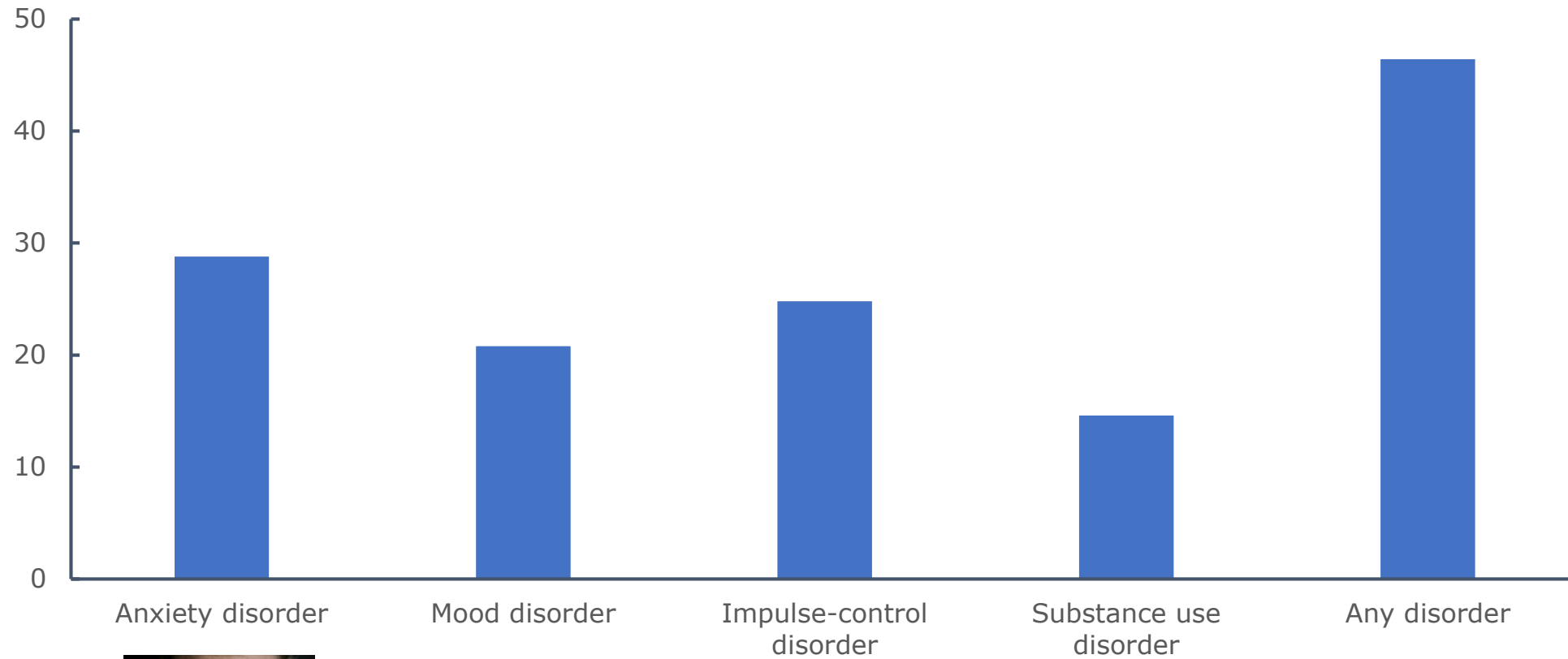
Research Master in Cognitive and Clinical Neuroscience Specialisation Psychopathology

Anne Roefs
Specialisation
coordinator
March 7, 2020



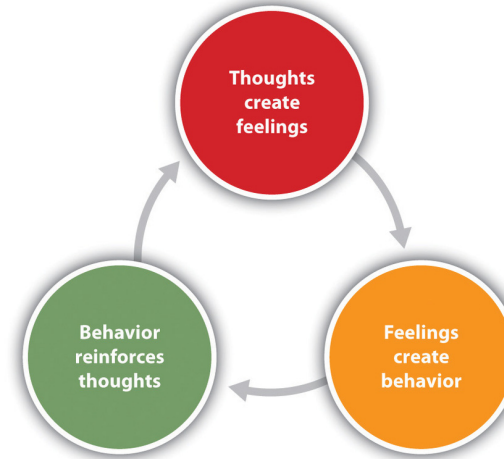
Why study psychopathology?

Lifetime prevalence



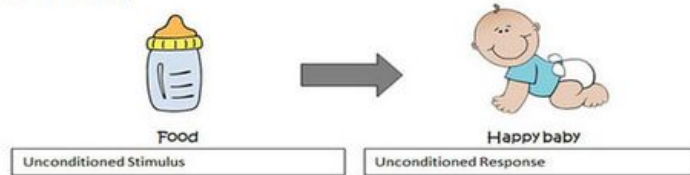
What are the underlying causes?

Go
the **extra**
mile

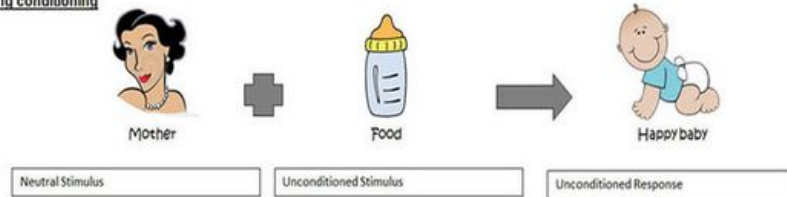


Attachment by Classical Conditioning

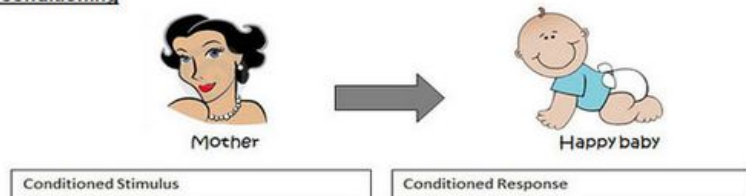
1. Before conditioning



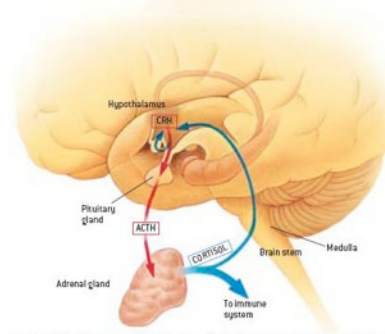
2. During conditioning



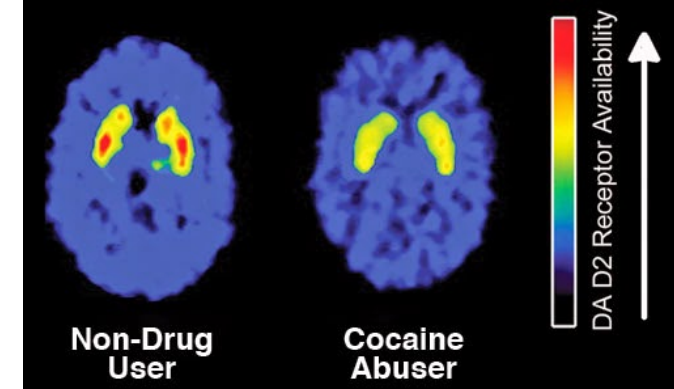
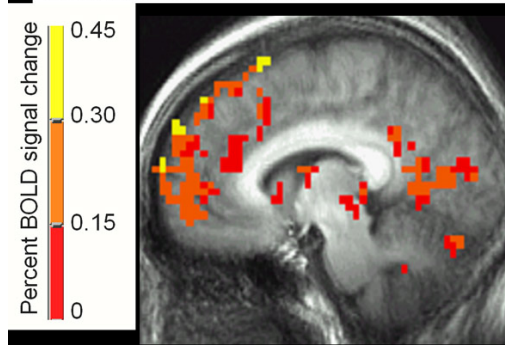
3. After conditioning



STRESS RESPONSE SYSTEM

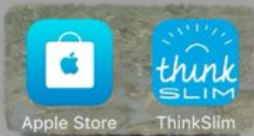


Social Phobics During Self-Processing

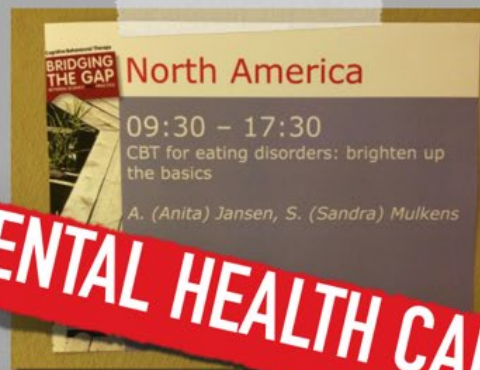




MECHANISMS LAB



NEW INTERVENTIONS



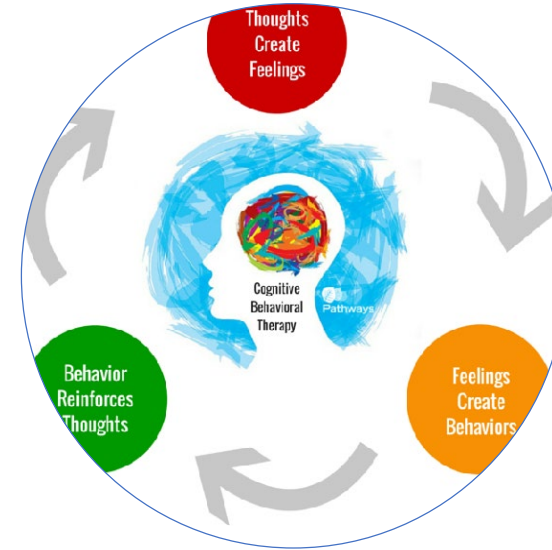
MENTAL HEALTH CARE



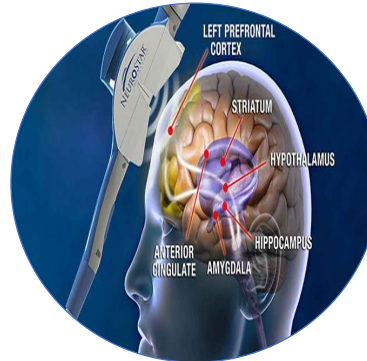
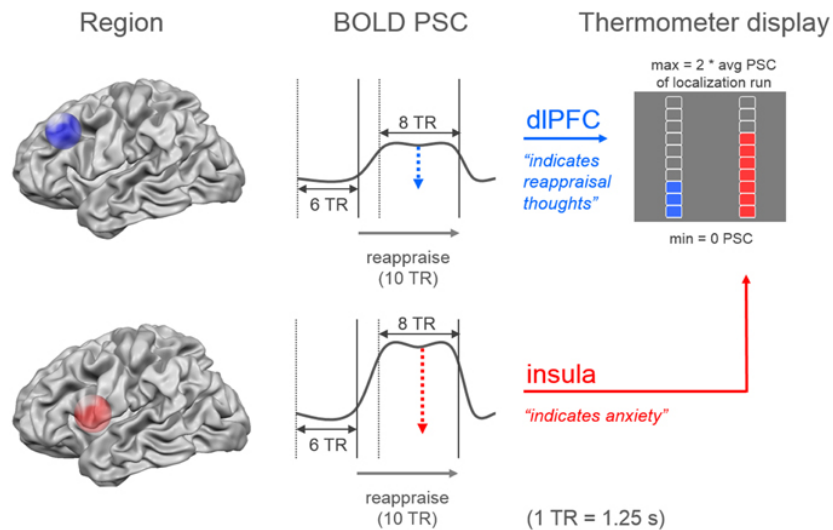
Go
the extra
mile

Which treatments work, for whom, and why?

Go
the
mile
extra



THE HAPPINESS OF
YOUR LIFE DEPENDS
UPON THE QUALITY
OF YOUR THOUGHTS



Core courses

- Current theories, research approaches, and clinical applications in all major disorders
- 4-week interactive seminars led by international experts in their fields
- Grades based mainly on papers, research proposals, presentations



Anxiety Disorders



Bodily distress



Psychosis



Depressive Disorder



Developmental psy



Mental health & happiness



Stress & Trauma



Eating Disorders



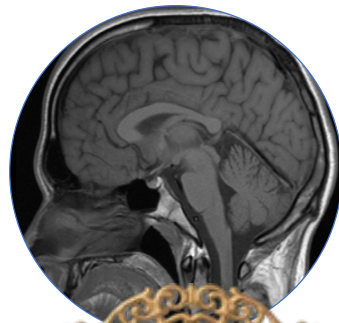
Personality disorders

Statistics, workshops and skills

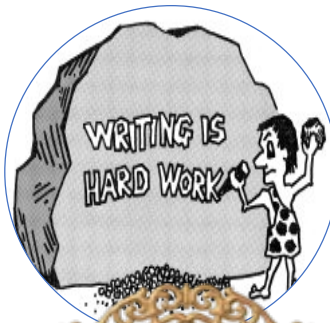
Go
the **extra**
mile



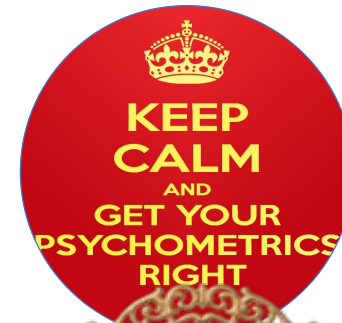
Statistics



Neuroanatomy | Neuroimaging



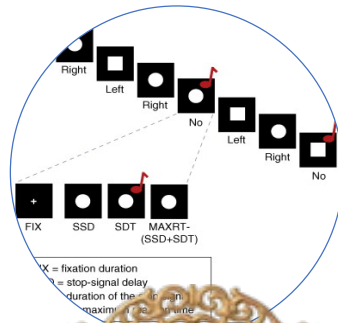
Scientific writing



Psychometrics



Psychopharmacology



Cognitive research methods



Epidemiology

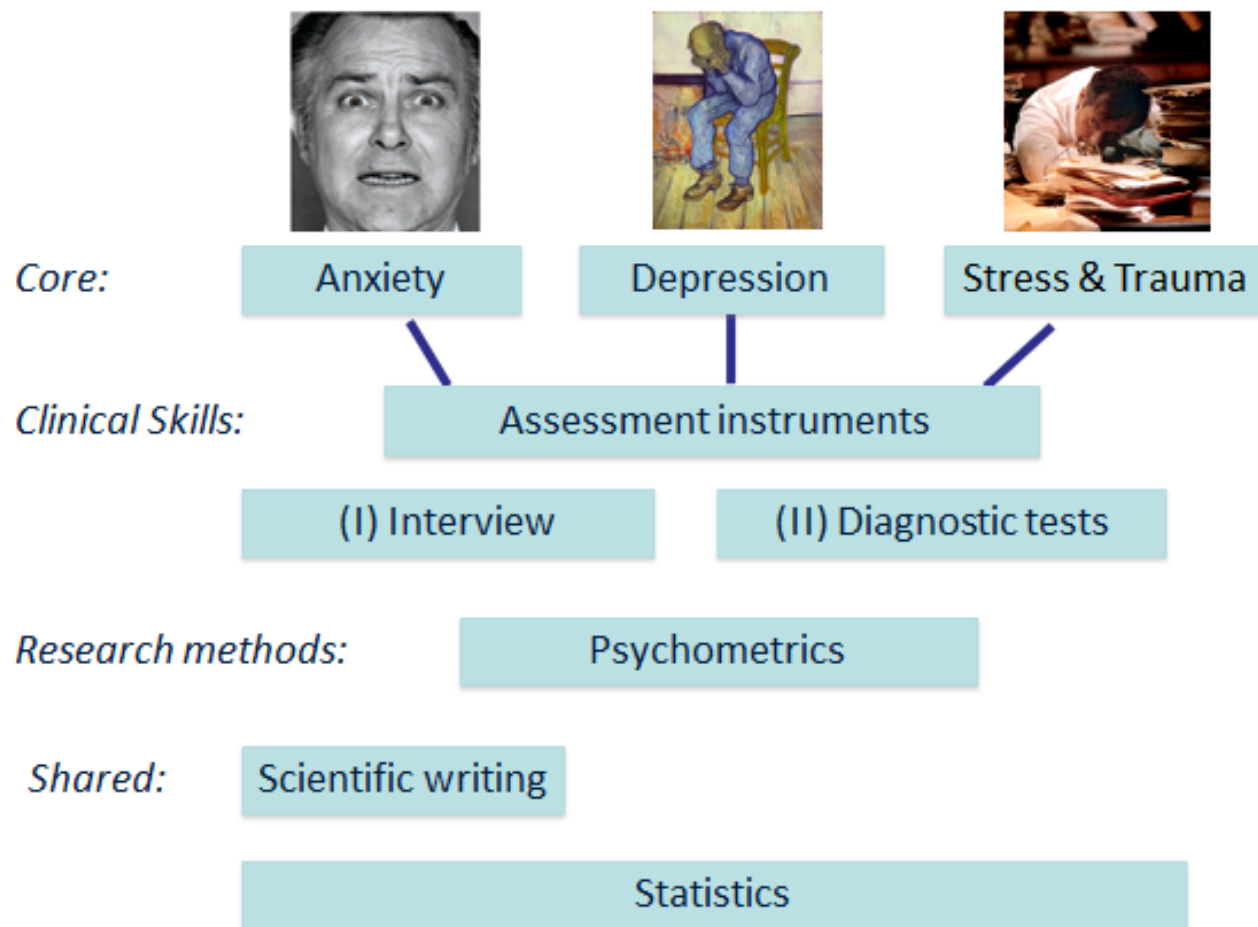


Clinical (research) skills

Courses are integrated into a coherent programme

Go
the
mile
extra

Programme until christmas...



Clinical aspects

- In curriculum:
 - Interviewing skills
 - Diagnostic and test procedures
 - Basic interventions
- Optional clinical internship (includes research)
- Preparation for scientist-practitioner career
 - Curriculum accredited for Dutch clinical programmes
 - Certification (GZ/LOGO, BAPD) possible

Internships

- Research (master's thesis): *19 or 32 weeks*
- Clinical (minor's thesis): *13 weeks*
- At the UM or...
- Excellent institutions worldwide via rich network of international collaborations



THE
UNIVERSITY OF
BRITISH
COLUMBIA



Career paths

- PhD training
- Clinical training
- Combination PhD and clinical training

Looking forward to your application!