

Master's Programme Governance and Leadership in European Public Health

Kasia Czabanowska
Programme coordinator

Master's Open Day
7 March 2020



Your Journey Starts Here



Who?

Staff Profile*: Strands & Module Coordinators



Helmut Brand
European Public Health



Kasia Czabanowska
Leadership



**Peter
Schroder-
Back**



Timo Clemens



David Townend



Genc Burazeri



Rok Hrzic
M-GLEPH 2016-
2017

* www.inthealth.eu

Strand coordinators



Helmut Brand
European Public
Health



**Kasia
Czabanowska**
Leadership



David Townend
Governance



Peter Schroder
Governance

Why

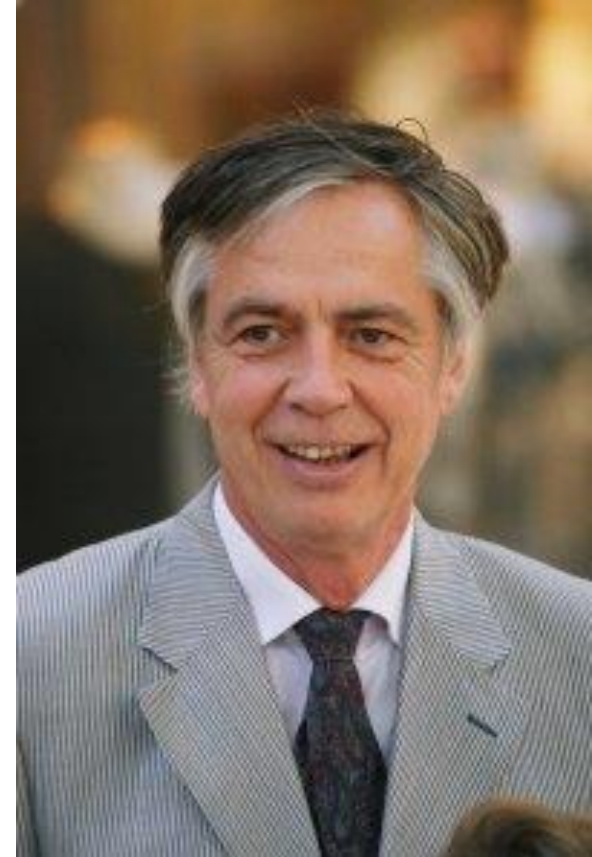


Go
the **extra**
mile

“Today’s public health professionals need to be able to lead in contexts where there is **considerable uncertainty** and **ambiguity**, and where there is often **imperfect evidence** and an absence of agreement about the precise nature of the problem and the solutions to it”

WHY?

- “Graduates of European Public Health are needed at all levels: national, regional and local.”
- We need effective public health workforce to address contemporary public health challenges.
- Need for graduates in European Public Health who understand the governance structures and processes and who know how to lead and where to lead to.



Fernand Sauer

Honorary Director General of the European Commission

First Director of the European Medicines Agency

Our mission statement

We educate and develop public health professionals able to **search for, identify, transfer and implement best practices** in Europe using skills of **effective leadership and understanding of multilevel governance.**

Unique European perspective



Health is a global
priority



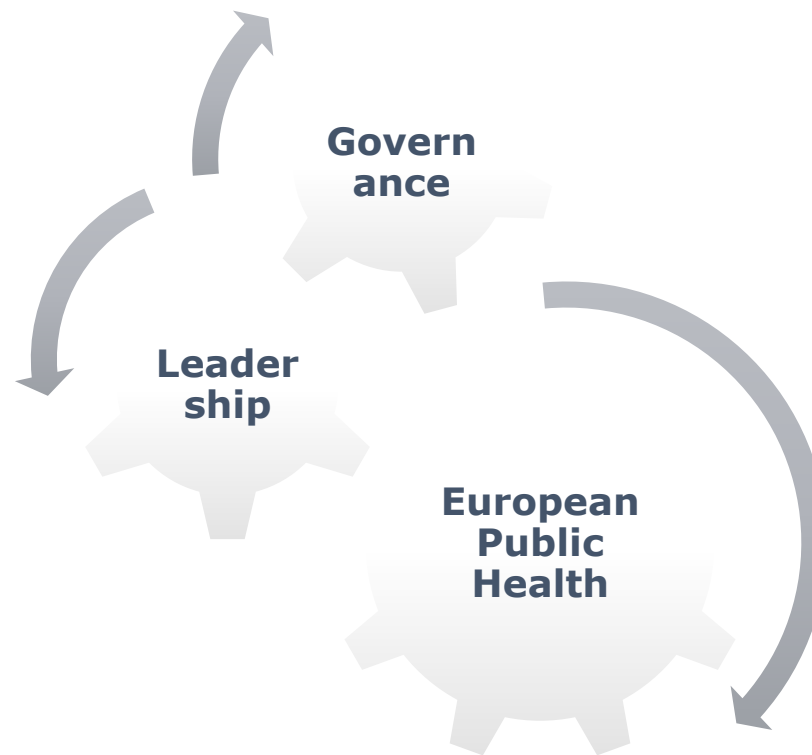
Complex public
health challenges



Unique Master's
programme

How?

Basic idea of M-GLEPH



Key skills



Key facts about M-GLEPH

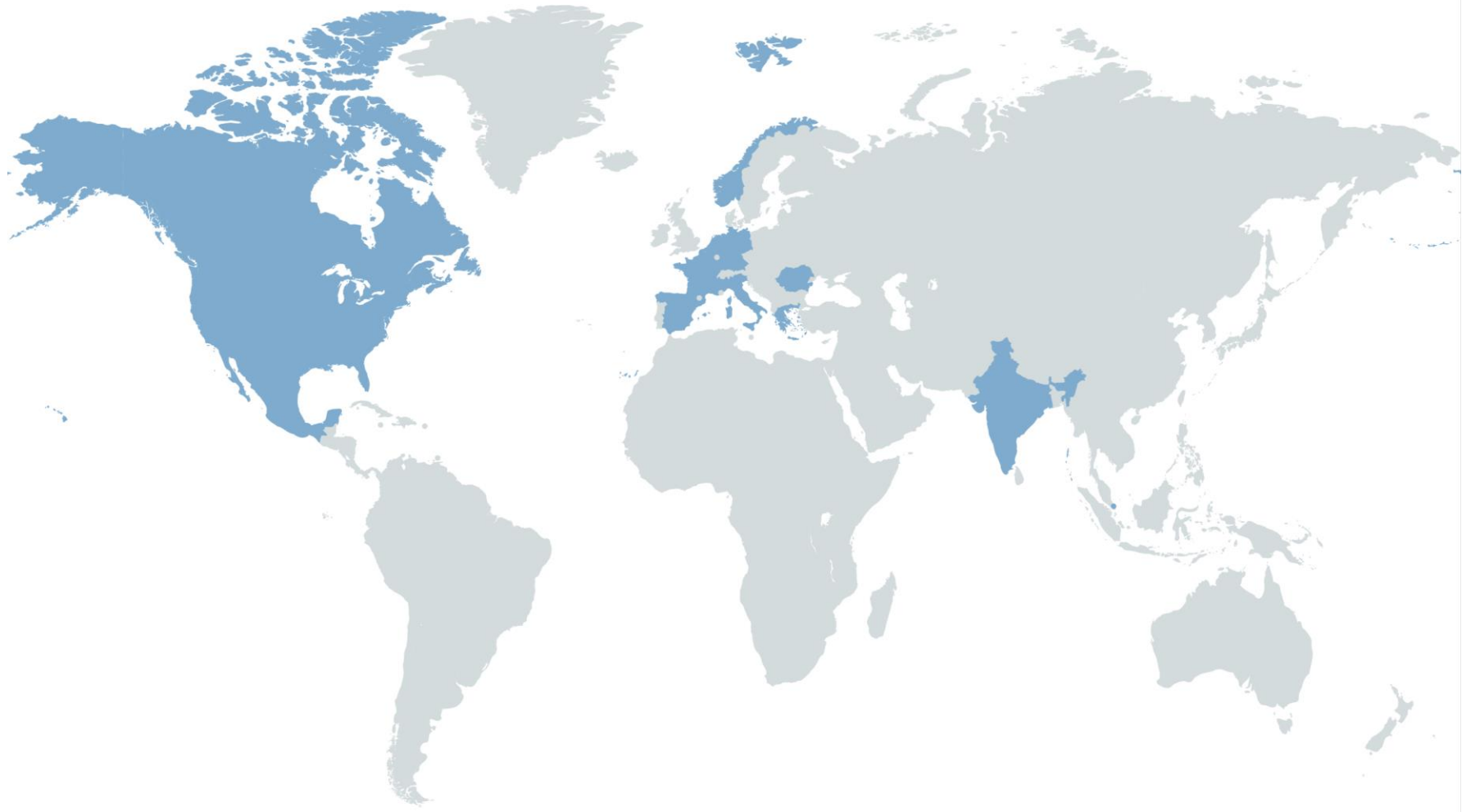
- 1 year Programme (40 weeks & 60 ECTS)
- Full-time: contact hours Thursdays & Fridays
- All content in English
- Interactive and project/problem-based teaching in small groups

Master Governance and Leadership in European Public Health 2020-2021

Leadership Strand 6 EC				
1. Introduction to Governance and Leadership in European Public Health	2. Measuring and Comparing Health in Europe Quantitative and Qualitative approaches	3. Identifying and Assessing Good and Best Practices in Health	4. Europe as one Zone: European Health Law and Policies	5. Research Methods
4 weeks 5 EC	4 weeks 5 EC	4 weeks 5 EC	4 weeks 5 EC	4 weeks 6 EC
Governance Strand				

6. Diffusion, Implementation and Quality Assurance of Health Innovations in Europe	7. Public Health Leadership	8. The EU, Enlargement and Global Health	9. Research Project and Master's Thesis
4 weeks 5 EC	4 weeks 5 EC	2 weeks 3 EC	10 weeks 15 EC
Governance Strand			Governance and Leadership in European Public Health

Students from within and outside of EU



M-GLEPH schedule and content: 1st Semester

Go
the **extra**
mile

Leadership strand (Kasia Czabanowska)

Sep –
Dec

Modern theories of (PH) leadership
Coaching and Mentoring sessions

6 ECTS



Received a success story
title from the European
Commission in 2015



**THIS IS PUBLIC
HEALTH**
#thisispublichealth

External leadership trainers



**Suzanne Marie
Babich**



Mark Avery



**Sally Fowler-
Davis**



Darren Shickle



**Kenneth A.
Rethmeier**



Tony Smith

How do we compare?

- While other health related masters focus on either national or global perspectives, we are the only unique one with the **focus on Europe**.
- Contrary to many other public health programmes, we provide **full public health leadership training** based on a modern competency model.




Key Action 1 - Erasmus Mundus Joint Master Degrees

European Master in Public Health
- EuroPubHealth Plus -



Governance and Leadership in European Public Health

*****Awarded 'Top Rated Programme' label, Keuzegids 2018*****

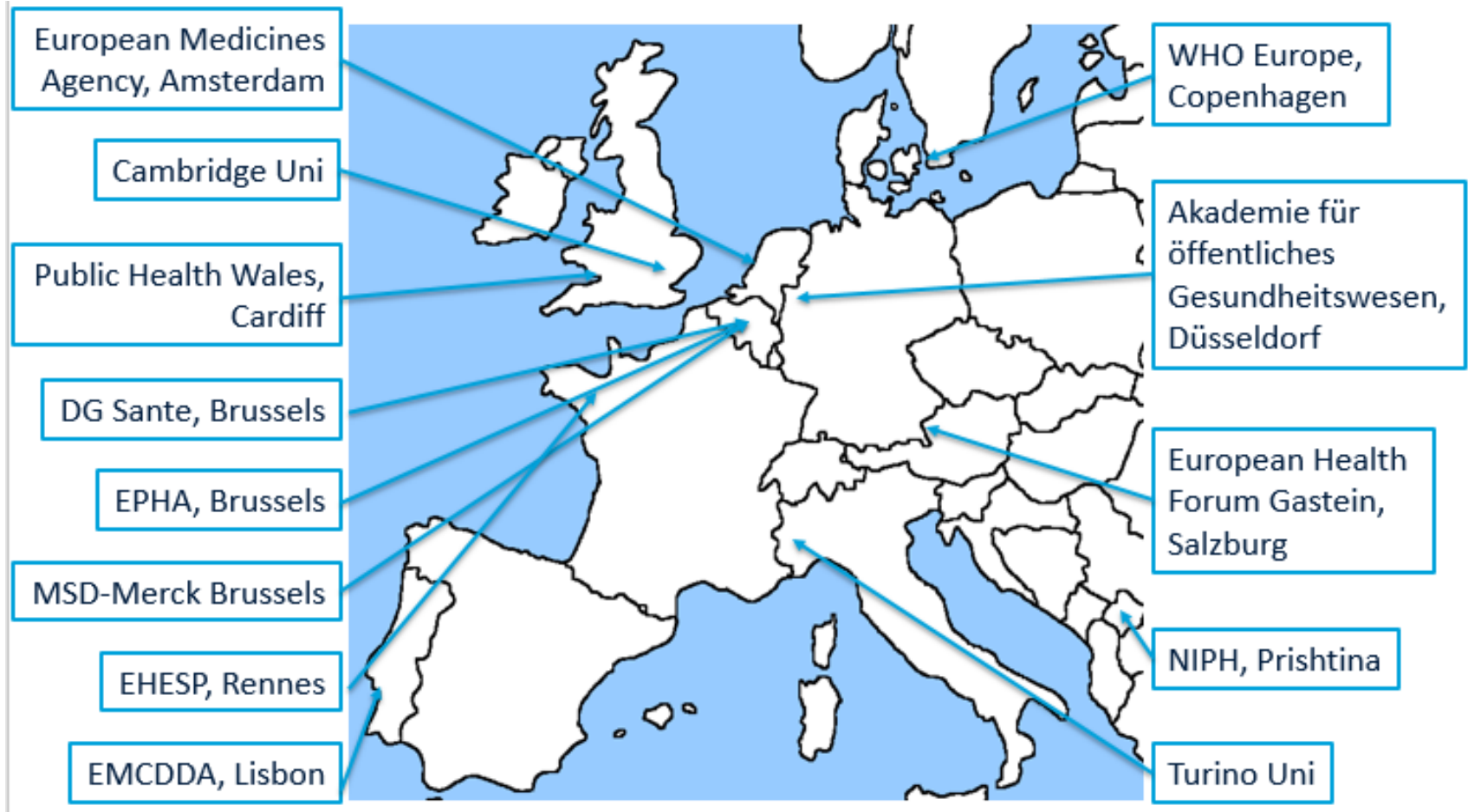
Do health policies intrigue you, and are you fascinated by the EU? Are you interested in why European health guidelines work in one country but not another? Then Governance and Leadership European Public Health might just be the programme for you. This unique programme provides you with the background and skills to analyse public health systems throughout Europe. Upon graduation, you'll be able to prepare, support and monitor high-level decision-making processes in European institutions, in government, and in public and private organisations. The programme will equip you with all the training you need to pursue as a health policy maker, but careers in research will also be open to you. [Download our full infopack](#) 

Also available as a [double degree programme](#)

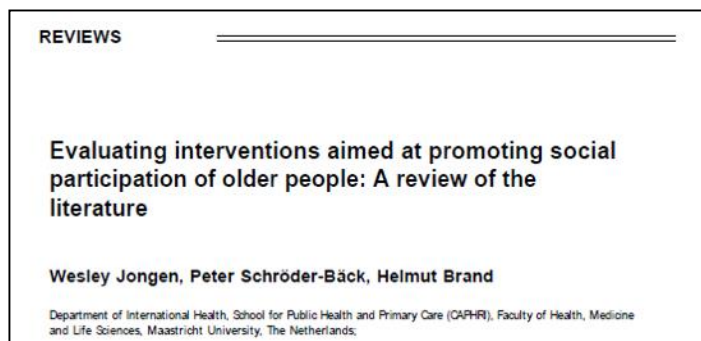
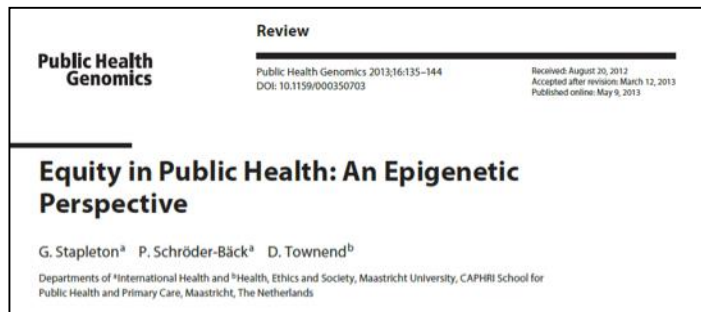
Double Degree with Bremen University (GER)

- Double Degree since 2018
- Starting at *Bremen University* (1st year)
 - First year of: Master of Arts: Public Health - Gesundheitsversorgung, -ökonomie und -management
 - Programme is in German.
- Continuing at Maastricht University (2nd year)
 - Full year of: Master of Science in Governance and Leadership in European Public Health
- After 2 years: two master degrees (MA & MSc)
- University. More info:
 - <https://www.uni-bremen.de/fb11/studium/>
- **Double Degree with Health Sciences University, Kaunas (LT)**
 - Master of Health Sciences and Master of Management and Administration of Health Care

(Some of the) placement options



Our graduates publish their MSc theses and win awards for their research...



Lisa Ploeg, our EPH master student took part in the Young Researcher's Forum organised by the ASHPER and won the first award for her thesis *'Diabetes and sustainable employability in the EU: A qualitative study'*.

... and go on to work in different fields of EPH

Academia



Junior
researcher
PhD
candidate
Research
fellow

Policy



Policy officer
Advisor
Project
officer

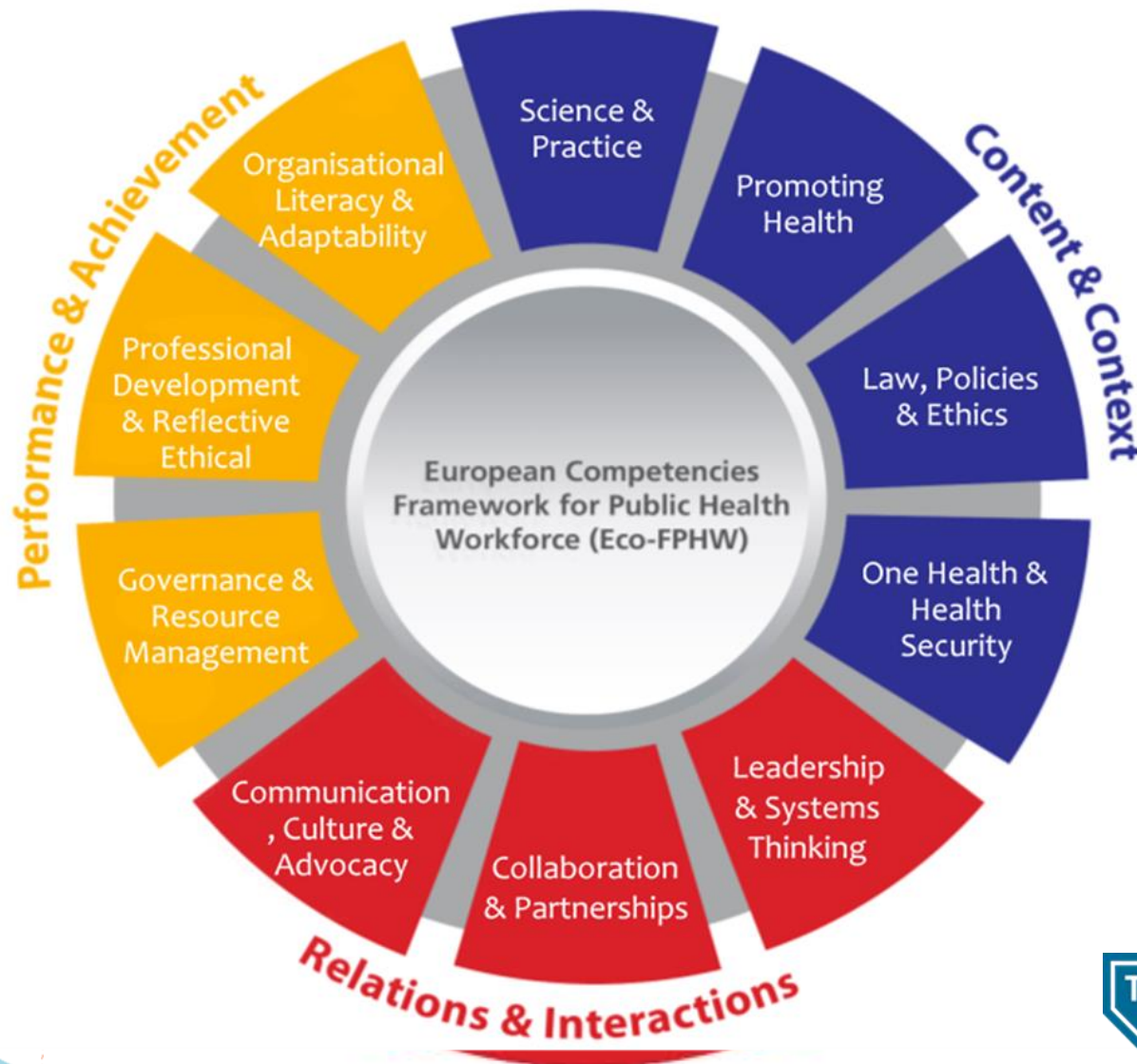
Business



Consultant /
associate
Application
coordinator
Project
manager

We prepare you for the job marked by developing public health competencies

Go
the **extra**
mile



THIS IS PUBLIC HEALTH

#thisispublichealth

ASPHET ASPPH



Based on the Dreyfus Five-Stage model of Adult Skills Acquisition (Bull Sci Technol & Soc 2004(3);24:177-181) and Koo and Miner (Annu. Rev. Public Health 2010; 1:253-69)



WHO
Essential
Public
Health
Operations



Competency		Level 1	Level 2	Level 3
1.7	Designs and conducts research which is informed by evidence and which adds to the evidence base for public health practice, involving relevant stakeholders in this process	As a principal investigator in a research project, a level 1 academic will design and coordinate research and supervise a research team. You will also collaborate with research led by others. You will have an in-depth knowledge of research methods and analysis techniques	As a level 2 academic you will have day-to-day project management responsibilities and lead smaller research projects. You will be involved in data collection/analysis. You will have an in-depth knowledge of research methods and analysis techniques.	Level 3 academics have responsibilities for data collection/analysis. The non-academic workforce will have had research training as part of their degree and will use competency in research methods when working with public health researchers

Relations & Interactions

6. Collaboration & Partnerships

6.1 Works across sectors at the local/national/international level organisational structures

6.2 Understands the interdependency, integration, and competition among healthcare sectors and different actors who have interests in public health issues

6.3 Identifies, connects and manages relationships with stakeholders in interdisciplinary and inter-sectorial projects to improve public health services and achieve public health goals

6.4.....

6.5.....

Some examples of M-GLEPH alumni jobs

- PhD Candidate
- HR Health Advisor at Fraport AG
- Health Economics & Reimbursement EMEALA
- Project Officer at Unie KBO
- Marie Curie Early Stage Researcher at University of Birmingham
- Business Consultant at Aranco Consultancy & Interim Management BV
- Vice President & Lead Global Health Policy Epilepsy at UCB Pharma
- Dutch Consulate in Malta
- Country Preparedness Support at European Centre for Disease Prevention and Control (ECDC)
- Junior CRA at Clinical and Epidemiological Investigation Center at CRP-Santé
- Doctoral Candidate at Institute for Public Health and Nursing Research - University of Bremen

(At least) 6 reasons to chose M-GLEPH



Unique European perspective



International students, staff & guest lecturers



Working in a small group of students with great access to and support from staff



Focus on best practice exchange – the current “hot” topic of EPH



10-week placement at key (European) public health institutions



Access to European health policy and research networks

Developing Leadership skills

You will be equipped with

- Professional, content knowledge
- Communication skills
- Leadership skills
- Self-confidence
- Courage to bring about change

Graduation



**THIS IS PUBLIC
HEALTH**

[thisispublichealth](https://thisispublichealth.org)

 ASPPI



Christmas Dinner



Master Open Day



Scan this nametag on Instagram to follow **glephum**.

Alumni
**Going
the extra
mile** *in
Health*

**Go
the extra
mile**

Natalie Kafi

*Medical researcher
BetterDoc
Cologne*

Bachelor:
European Public Health
Master:
Governance and Leadership
in European Public Health

Rosemarie Lucero: Pay it forward, GLEPH!

A personal scholarship for a Dutch master's student

Go
the **extra**
mile

STUDENT
IN THE
PICTURE





Hi, my name is Malin from the Netherlands, **Governance and Leadership in European Public Health** master's student

Follow me on Instagram and find out more about my study experiences and my life in Maastricht!

extramile_malin

Questions?



Contact information

Kasia Czabanowska

kasia.czabanowska@maastrichtuniversity.nl

www.maastrichtuniversity.nl/education/master/master-european-public-health



+31 (0)43- 388 5798



www.maastrichtuniversity.nl/fhml



www.maastrichtuniversity.nl/fhml/contact



[/um.fhml](https://www.facebook.com/um.fhml)



[health.medicine.lifesciences](https://www.instagram.com/health.medicine.lifesciences)