

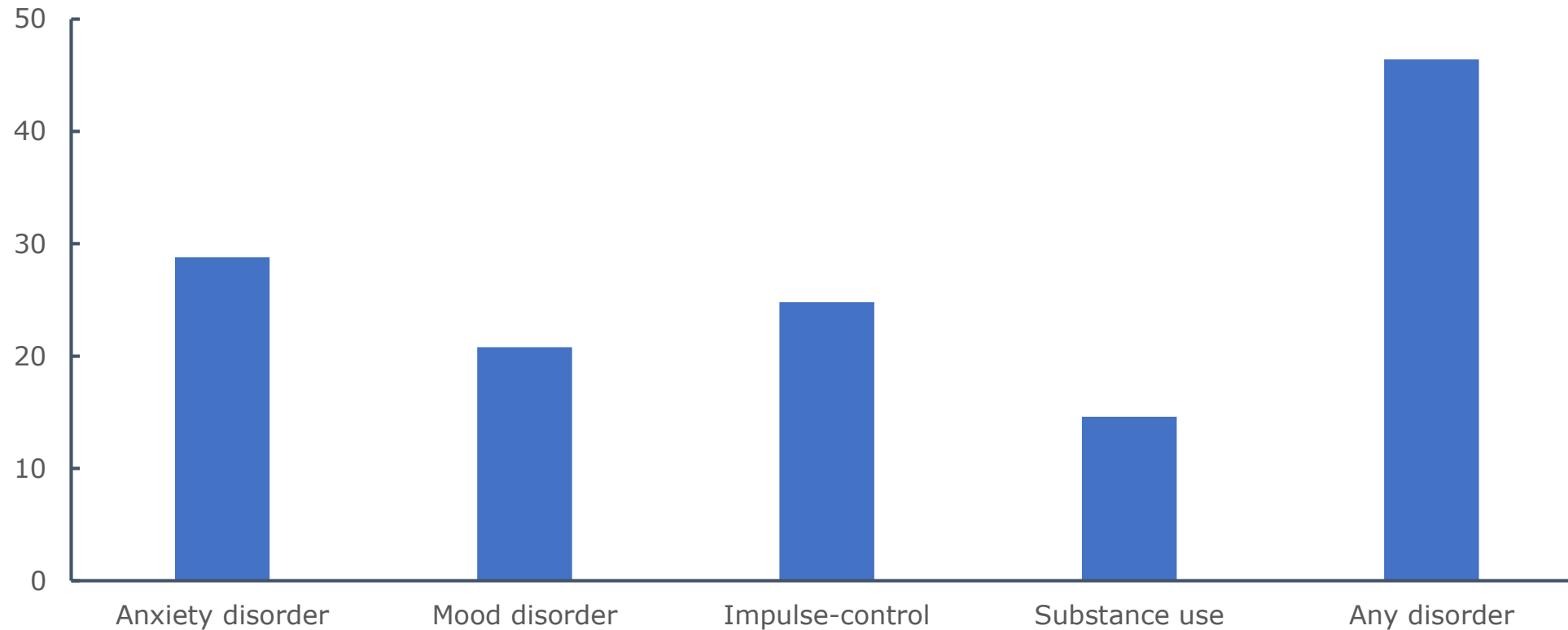
Research Master in Cognitive and Clinical Neuroscience Specialisation Psychopathology

Anne Roefs
Specialisation
coordinator
March 16, 2019



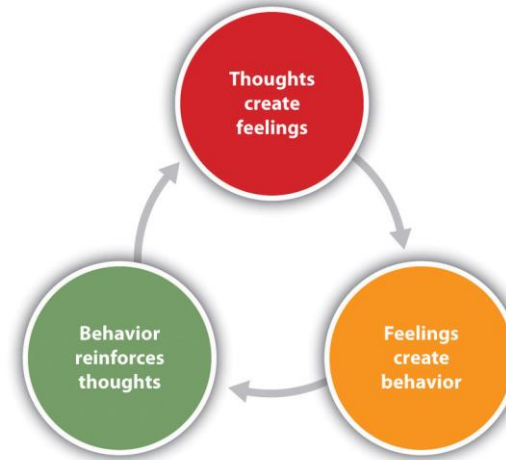
Why study psychopathology?

Lifetime prevalence



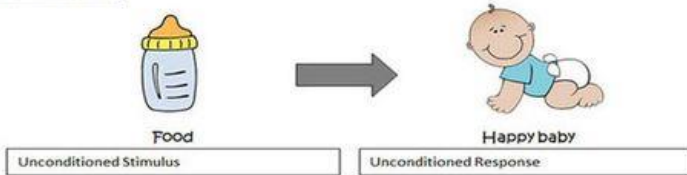
What are the underlying causes?

Go the **extra** mile

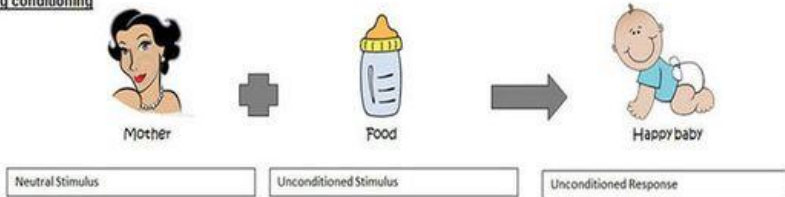


Attachment by Classical Conditioning

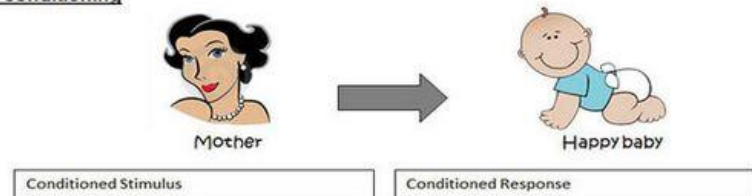
1. Before conditioning



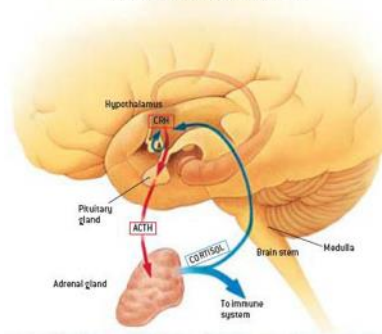
2. During conditioning



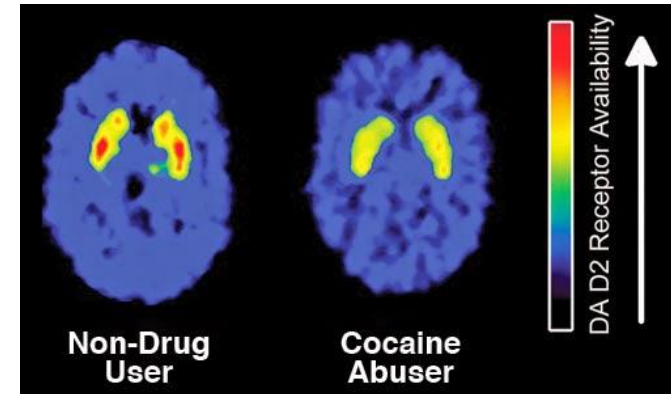
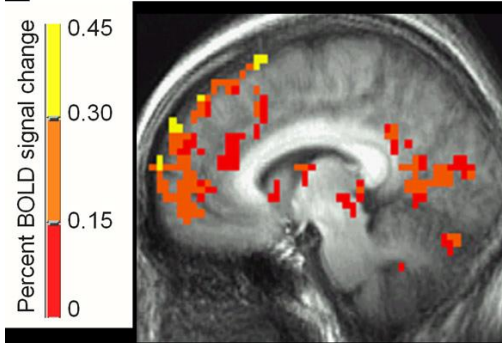
3. After conditioning



STRESS RESPONSE SYSTEM



Social Phobics During Self-Processing





NEW INTERVENTIONS



North America
 09:30 – 17:30
 CBT for eating disorders: brighten up the basics
 A. (Anita) Jansen, S. (Sandra) Mulkens

MENTAL HEALTH CARE

Leren Om Niet Te Eten

LONTE
 Recent publiceerden Anita Jansen en Sandra Mulkens twee Nederlandstalige e-books ("leren om niet te eten"; LONTE) voor behandelaars in de gezondheidszorg. De boeken staan vol filmfragmenten die het gebruik van cognitie- en gedragstechnieken voor de behandeling van obesitas demonstreren.

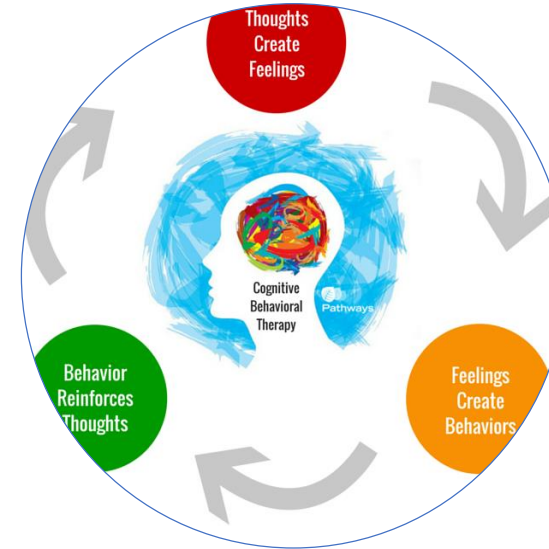
LONTE Boek 1 (iTunes) LONTE Boek 2 (iTunes)

www.lonte.org

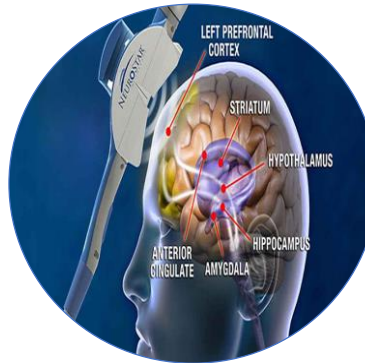
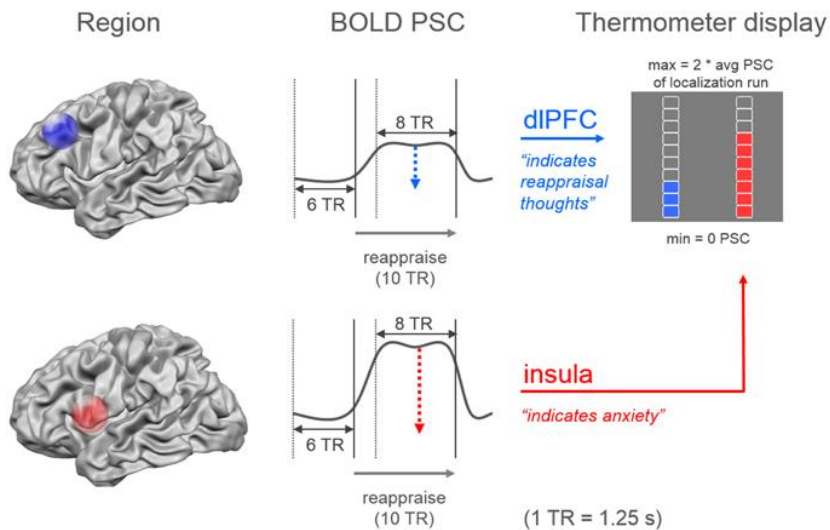


Go the **extra** mile

Which treatments work, for whom, and why?



THE HAPPINESS OF YOUR LIFE DEPENDS UPON THE QUALITY OF YOUR THOUGHTS



Core courses

- Current theories, research approaches, and clinical applications in all major disorders
- 4-week interactive seminars led by international experts in their fields
- Grades based mainly on papers, research proposals, presentations



Anxiety Disorders



Bodily Distress Disorders



Psychosis

Go the extra mile



Mood Disorders



Developmental Psychopathology



Mental Health & Happiness



Stress & Trauma



Eating Disorders



Personality Disorders

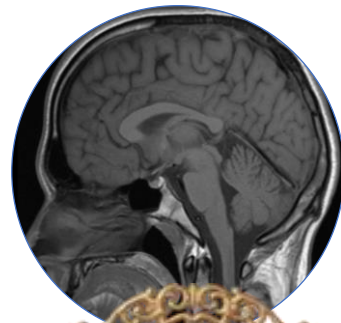
C
O
R
E

C
O
U
R
S
E
S

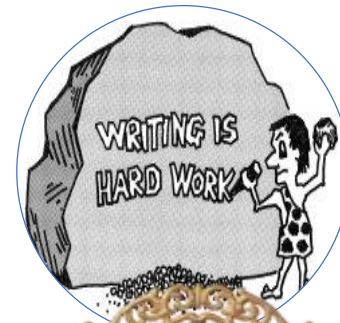
Statistics, workshops and skills



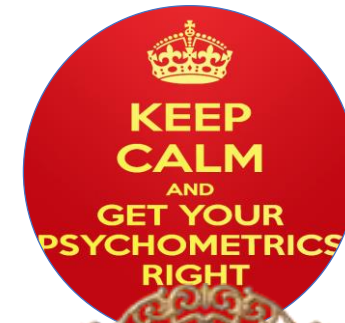
Statistics



Neuroanatomy | Neuroimaging



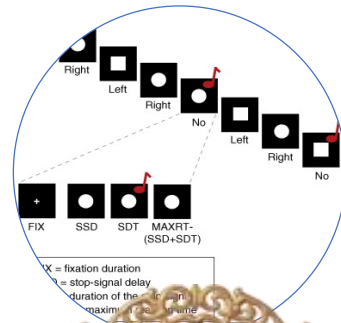
Scientific writing



Psychometrics



Psychopharmacology



Cognitive research methods



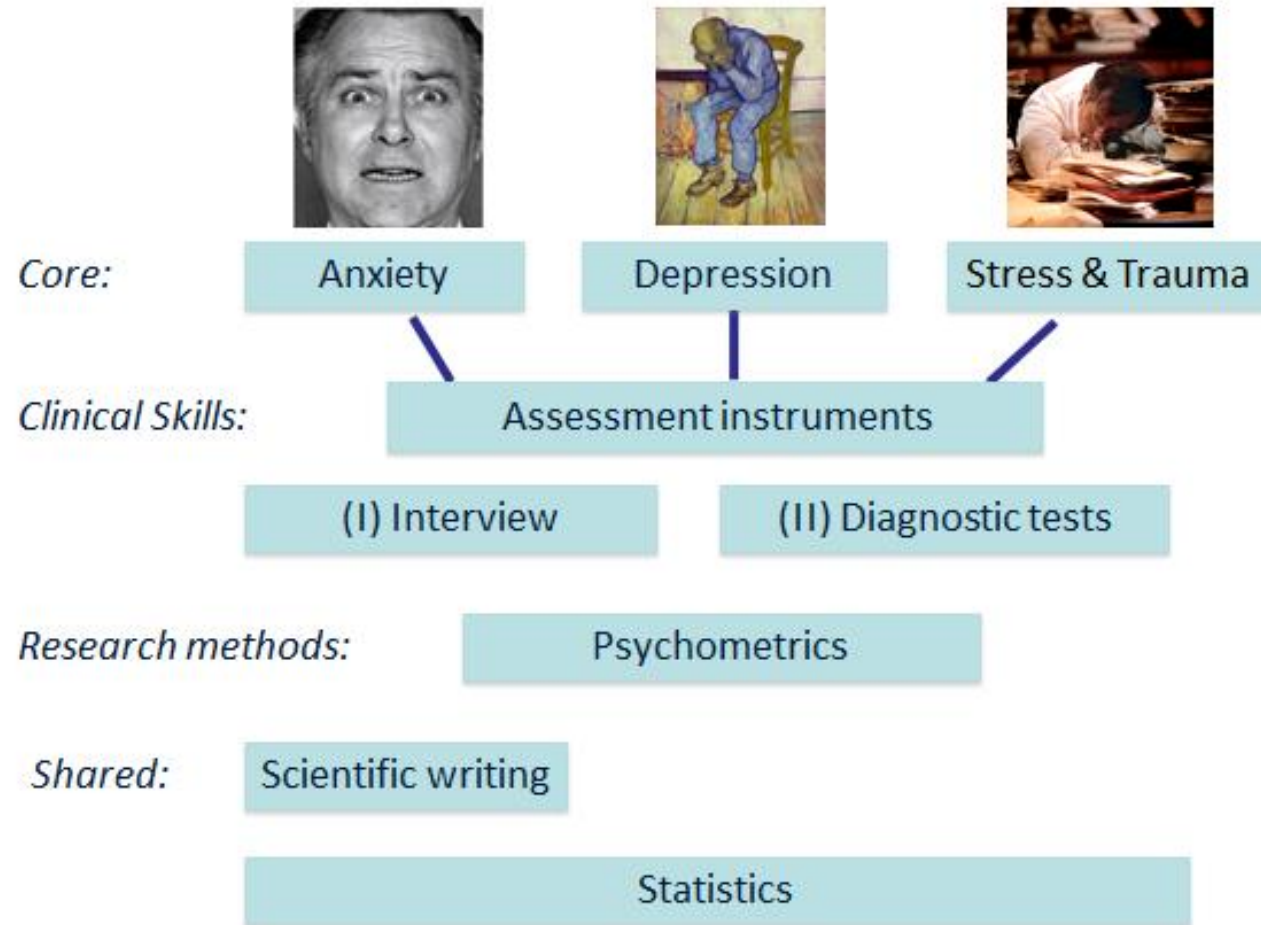
Epidemiology



Clinical (research) skills

Courses are integrated into a coherent programme

Programme until christmas...



Clinical aspects

- In curriculum:
 - Interviewing skills
 - Diagnostic and test procedures
 - Basic interventions
- Optional clinical internship (includes research)
- Preparation for scientist-practitioner career
 - Curriculum accredited for Dutch clinical programmes
 - Certification (GZ/LOGO, BAPD) possible

Internships

- Research (master's thesis): *19 or 32 weeks*
- Clinical (minor's thesis): *13 weeks*
- At the UM or...
- Excellent institutions worldwide via rich network of international collaborations

Go
the **extra**
mile



THE
UNIVERSITY OF
BRITISH
COLUMBIA



Career paths

- PhD training
- Clinical training
- Combination PhD and clinical training

For more information:

 Go
the extra
mile

- Visit admissions and RM track representatives at the information market today.
- Join the Q & A sessions this afternoon.
- Contact the Research Master Front Desk: researchmaster-fpn@maastrichtuniversity.nl
- Visit our website: <https://www.maastrichtuniversity.nl/fpn/researchmaster/pp/>



The screenshot shows the website for the Research Master in Cognitive and Clinical Neuroscience. The navigation bar includes links for Education, Research, Life@UM, News & events, About UM, and Support. The breadcrumb trail indicates the path: /Education / Master's / Psychopathology. The main content area features a blue header with the text 'Master' and 'Faculty of Psychology and Neuroscience', followed by the program title 'Research Master in Cognitive and Clinical Neuroscience' and 'Psychopathology'. A brief description of the program is provided. On the right, a 'Fast facts' section lists key details: optimal preparation for a PhD, close interaction with senior researchers, a research internship, a 2-year full-time program in English, and selective admission. A green 'Apply now!' button is located at the bottom right of the page.