

Newsletter MaastrichtHETA

Networking in Health Economics

MaastrichtHETA
Health Economics and Technology Assessment

ISPOR
Improving healthcare decision

Fall newsletter 2022

Welcome

On May 2022, during the Lola Health Economics Study Group (LolaHESG) conference that was held in Maastricht, we launched the **Maastricht Health Economics and Technology Assessment center (MaastrichtHETA)**.

MaastrichtHETA unites academics from Maastricht University (UM) and Maastricht University Medical Center (Maastricht UMC+) and includes about 60 researchers evolved in the field of health economics and health technology assessment. MaastrichtHETA develops and disseminates innovative methodology and knowledge for advancing, promoting and teaching best practices in health economics and health technology assessment.

MaastrichtHETA

Health Economics and Technology Assessment

We are pleased to share our first Newsletter, keeping you up to date with all the news and activities that took place in the last 5 months (between May and September 2022). The newsletter includes an introduction of the ISPOR-Student Chapter, inaugural lectures, PhD defenses, participation at congresses, invited talks, some of our members, recent funded projects, our seminars and list of publications.

We wish you a good reading and remain at your disposal to bring health economics and technology assessment in your research!

ISPOR Student Chapter

As part of the MaastrichtHETA Centre, the ISPOR (International Society for Health Economics and Outcomes Research) student chapter provides a platform to connect with colleagues in the field of health economics and outcomes research (HEOR) by organizing various events like workshops, lectures, journal clubs, and a lot more. Feel free to join our activities, meet colleagues and expand your health economics - network.

Follow us to stay informed about our upcoming events and get up-to-date information about current developments and topics in the field. For more information and for the signing up for the ISPOR-SC newsletter, please reach out to ispor-sc@maastrichtuniversity.nl

We are looking forward to meeting you!

Board members academic year 2022-2023



Dr. Mickaël Hiligsmann
Faculty Advisor



Isabell Wiethoff
President



Thomas Otten
Secretary



Nele Raskin



Nannan Li



Anne Kleijburg



Andrea Fernández
Coves



Teebah Abu Zahra

Contact & Social Media



Mail us via: ispor-sc@maastrichtuniversity.nl



Follow us on LinkedIn: MaastrichtHETA / ISPOR-SC



Visit the MaastrichtHETA website:

<https://www.maastrichtuniversity.nl/maastrichttheta>

INAUGURAL LECTURE

Inaugural Lecture Prof. Dr. Aggie Paulus

On June 17 2022, Aggie Paulus gave her inaugural lecture entitled 'consciously towards efficiency in education and healthcare: getting to know each other better!' ("[Bewust op weg naar doelmatigheid van zorg en onderwijs: elkaar beter leren kennen!](#)").

In her inaugural speech, Aggie emphasizes the growing need for efficiency in the healthcare sector and educational sector. This need is mainly related to an increased demand (for healthcare and higher education), growing staff shortages (in healthcare and secondary



education) and rising expenditures (in healthcare and higher education, especially in health professions education).

These developments challenge policymakers and other stakeholders in both sectors to make difficult but necessary choices. To optimize these choices requires, among others, information about the costs and benefits/effects of different alternatives (e.g. different interventions or innovations) and about possibilities to achieve more efficiency. Moreover, it requires relevant actors in both sectors to become more aware of their economic footprint (e.g. the impact that their decisions have on the costs of healthcare or education) and the importance to use economic information as part of their decisions.

To achieve this, it is important to not only look at the two sectors individually but also in coherence. Many health issues and (preventive) health interventions, for instance, generate costs and benefits in others sectors, including the educational sector. At the same time, education on health economics can play a crucial role in making current and future health professionals, clinical guideline developers and other stakeholders in healthcare more cost conscious. Education on economics to those involved in the execution and management of education can play a comparable role in achieving cost conscious education. The latter, however, first requires more information on the cost(effectiveness) of education, especially health professions education. As economic evaluations of health professions education are still scarce, experiences with economic evaluation (methods) in the healthcare sector can serve as an example for such evaluations in the educational sector.

INAUGURAL LECTURE

Inaugural Lecture Prof. Dr. Milena Pavlova

Milena Pavlova has been appointed as Professor in Health Economics and Equity at the Department of Health Services Research, part of Care and Public Health Research Institute (CAPHRI) at the Faculty of Health, Medicine and Life Sciences.

On July 14 2022, Milena gave her inaugural lecture entitled 'Toward robust and fair global health systems: old challenges in new realities'. She explored accessibility, affordability and equity problems related to healthcare financing, and the challenges these problems create for health systems of high-, middle- and low-income countries. The focus was on the trade-off between equity and efficiency in the allocation of healthcare resources, services and products.



Socio-economic disparities, such as those related to housing, nutrition, water supply, literacy and income, can explain health inequalities across the globe, but healthcare provision also plays a prominent role. In particular, access to good quality preventive, curative and long-term care services is one of the key determinants of health. Ensuring such services is however costly, and It is therefore not surprising that together with life expectancy, the expenditure on health has been increasing as well. Moreover, there are striking differences across the countries. In particular, European countries are the biggest spenders with more than 3000 international dollars per person per year. This is 10 times higher than the health expenditure per capita in African countries, where not more than 300 international dollars per person per year are spent on average.

These two extremes, the very high expenditure in Europe and very low expenditure in Africa, bring questions such as whether it is worth spending so much on health in Europe and whether it is beneficial for African countries to strive to secure extra funding to reach the European levels. Because of the scarcity of resources, we need to know if increased health spending has additional value to society before we claim it is acceptable. Two main challenges are entangled in this issue: how to make the most of the available healthcare resources, which we know as efficiency, and how to make sure that available resources are fairly distributed, which is known as equity. The efficiency and equity criteria have been generally accepted as social goals, guiding the global health systems throughout the years. Theoretically speaking, they both are important and can be achieved by employing the necessary tools. In practice, however, such tools are not readily available, or not yet adapted to the different global contexts and are not necessarily feasible due to political, economic, social and health system constraints. Research in this area is highly needed to support decision-making.

LolaHESG (Low Lands Health Economics Study Group) conference at Maastricht



MaastrichtHETA organized the lolaHESG (Low Lands Health Economics Study Group) at the Castle Vaeshartelt on 19-20 May which was a great success with more than 115 participants from the Netherlands and beyond. A total of 40 research papers were extensively discussed and a plenary session was given by Prof Iwan van der Horst (MUMC+), chairman of the executive board of the Dutch association of Intensive Care on “leadership in times of covid-19”.

ASPHER Working Group on Economic Evaluation in Healthcare in Europe (EEHE)

EEHE | 
Working Group

<https://www.aspher.org/economic-evaluation-in-healthcare-in-europe-eehe.html>

 @EEHE_WG

The ASPHER Working Group on Economic Evaluation in Healthcare in Europe (EEHE) was launched in 2019. The ultimate goal of the group is to establish the current status, future needs and good practices in teaching healthcare economic evaluation in Europe. The focus is on course content and educational approaches, encompassing the exchange of best practices and know-how.

Currently, the group discusses the development of a competencies framework for economic evaluation expertise of public health professionals engaged in the evaluation of new technologies, policies and system reforms. The group includes 20 academic partners from several European countries.

The EEHE working group is chaired by Milena Pavlova, Department of Health Services Research. Silvia Evers, Wim Groot and Diogo Lopes Leao are representatives on behalf of Maastricht University.

For contact: Milena Pavlova, e-mail: m.pavlova@maastrichtuniversity.nl

PhD DEFENSES

On June 24th, 2022, **Willem Witlox** successfully defended his doctoral dissertation titled 'Prophylactic cranial irradiation for stage III non-small cell lung cancer patients treated with curative intent', which was supervised by Prof D. Ruyscher, Prof M. Joore and Dr. B. Ramaekers. The research included in his dissertation focused on the effectiveness and cost-effectiveness of prophylactic cranial irradiation for brain metastases of non-small cell lung cancer.



On June 30, 2022, **Irina Pokhilenko** successfully defended her doctoral dissertation titled 'Costs and Benefits in Education: Addressing the Methodological Challenges and Broadening the Societal Perspective in Mental Health Economics', which was supervised by Prof. S. Evers, Prof. Aggie Paulus, and Dr. Ruben Drost. The research included in her dissertation focused on developing novel internationally applicable health economics methods to support the inclusion of broader costs and benefits in economic evaluations.

On July 11, 2022, **Bobby Presley** successfully defended his doctoral dissertation titled 'Pharmacist services and medication adherence in diabetes care in Indonesia', which was supervised by Prof. Wim Groot and Prof. Milena Pavlova.

The dissertation supports the implementation of educational and behavioral-based intervention in Indonesia to improve medication adherence among patients with diabetes. Direct interaction between pharmacists and patients is a critical component of the desired services to improve medication adherence. Easy access to a pharmacist is the first important step for the pharmacist to deliver services that focus on patient care, especially to improve medication adherence. More freedom of choice for patients regarding pharmacist services to improve medication adherence may better cater to their preferences.



On September 19th, 2022, **Plaxcedes Chiwire** successfully defended her doctoral dissertation titled 'Investigating Patient Preferences in Public Health Service Delivery in the Western Cape Province, South Africa', which was supervised by Prof. S. Evers, Dr. Mickaël Hiligsmann, and Dr. Hassan Mohamed. The research included in her dissertation focused on eliciting patients' preferences for public health community services and for HIV diagnostic in the Western Cape Province, South Africa.

CONFERENCES, SEMINARS AND INVITED LECTURES



Dr. Mickaël Hiligsmann led a “meet the expert” session entitled “How can health economics help us deliver better patient care in the musculoskeletal area” during the Congress of the European Calcified Tissue Society in Helsinki, 7-10 May 2022

Dr. Mickaël Hiligsmann was invited as speaker during the Summer School of Ageing organized by the Venice International University that took place in Venice between June 13 and 17, 2022. He provided lectures and practicals on the place of health technology assessment in the context of ageing.



Dr. Merel Kimman and Drs Britt Thomassen were invited speakers at the European Society of ColoProctology Scientific Conference in Dublin (22 September 2022) to present about the following topic “Development and validation of PROMs for the colorectal cancer patient”.

FUNDED PROJECTS

Dr. Merel Kimman was a co-applicant on the following project that has received funding (€1.6 million) from the National Health Care Institute and ZonMw. : Effectiveness and cost-effectiveness of lymphaticovenous anastomosis for cancer patients who suffer from chronic peripheral lymphedema. This study looks at the effects of lymphatic anastomosis (LVA). This is an operation to reduce or prevent lymphoedema after cancer treatment. The aim is to show that LVA surgery is effective and leads to lower healthcare costs over time. The study is for all people who have lymphoedema in an arm or leg after cancer treatment. The study is led by dr. Qiu Shao (MUMC) and will start in March 2023.

Dr. Charlotte Beudart and Dr. Mickaël Hiligsmann received in September 2022 a 1-year funding from ReumaNederland to develop a project named “Current and future Health and Economic Burden of OA in Netherlands”. The research team is composed with Dr. Corné Baatenburg de Jong (from ReumaNederland), Dr. Charlotte Beudart, Prof. Mickaël Hiligsmann, Prof. Silvia Evers and Prof. Annelies Boonen (From Maastricht University). The project is composed with three work packages; 1. Analysis of the Maastricht Study to assess costs and utilities of Dutch patients suffering from osteoarthritis; 2. Scoping review of health economics data for Dutch patients suffering from osteoarthritis; 3. Estimation of the clinical and economic implications of improved OA management in NL.

SOME OF OUR MEMBERS

Caroline Daccache, Lebanese, is a Ph.D. candidate at Maastricht University under the supervision of Prof Silvia Evers and Dr. Mickaël Hiligsmann). Caroline is an experienced researcher in the pharmaceutical industry. Caroline's Ph.D. project aims to develop the Lebanese Economic Evaluation Guidelines (EEGs). In 2022, she published two systematic reviews. The first entitled "Economic evaluation guidelines in low- and middle-income countries (LMICs)" was presented at the iHEA congress. Additionally, it was, for several weeks, the most read article in the IJTAHC. The second is entitled "The development process of economic evaluation guidelines in LMICs." She co-authored "The Economic and societal burden of multiple sclerosis on Lebanese society: a cost-of-illness and quality of life study protocol." Currently, in Lebanon, Caroline is executing a deliberative process with the involvement of health care system key stakeholders from several backgrounds with the ultimate objective of developing the Lebanese Economic Evaluation Guidelines.



Andrea Gabrio: "I am an assistant professor working at the department of Methodology and Statistics at FHML and most of research revolves around the implementation of statistical methods for health economic evaluations, especially for the handling of missing values. I am currently a PhD supervisor for an external project in health economics with UCL (UK) and a member of the [Statistics for health economic evaluations group](#). This year I presented my work at the [Lola](#), the [EuHEA conference](#) and, as an invited speaker, at health economics seminars at VU Amsterdam and King's College London. Of my most recent publications, I highlight: An applied RCT-based CEA of a reablement training program for homecare staff, which I supervised in collaboration with HSR team from UM: [link](#). A simulation-based evaluation of the use of mixed models for RCT-based CEA, which I developed myself with other international colleagues: [link](#)"

Lieke Maas: "Hello everyone! My name is Lieke, I am 24 years old and have recently graduated from the Master Healthcare Policy, Innovation and Management. Together with my background in biomedical sciences, my passion lies in bringing affordable treatment to patients, from the R&D development until prescription by the physician and the whole process in between! Since August 2022, I have been fortunate enough to start as a junior researcher. I am currently working in a team that investigates the effect of a multi-component adherence intervention (MCAI) in patients with osteoporosis."



Jalal Dahham: "In my fifteen-year career to date, I have enjoyed being an economic advisor to different organizations. Since 2019 I have been affiliated with Maastricht University as a PhD Candidate in Health Technology Assessment. My PhD research is on the Economic Burden of Multiple Sclerosis in low- and Middle-Income Countries using the case of Lebanon. The project is partly in collaboration with the American University of Beirut. The severe financial and economic crises in Lebanon offered my PhD trajectory the invaluable experience of learning how to conduct high-quality cost-of-illness and quality-of-life studies amid crises in a country lacking health economics guidelines."

Bradley Sugden: “I recently joined the Clinical Epidemiology and Medical Technology Assessment (KEMTA) department at MUMC+ as a PhD candidate. My thesis will focus on advancing radiotherapy decision-making for the treatment of patients with breast cancer, lung cancer, and oesophageal cancer. I am currently in the early stages of externally validating the Normal Tissue Complication Probability models currently used in The Netherlands to determine proton therapy eligibility for the aforementioned indications. My role also includes acting as a member of the External Assessment Group for the National Institute for Health and Care Excellence (NICE) in the UK, here at KEMTA.”



SOME PUBLICATIONS UNDER THE LOOP



Bjorn Schwander: our latest research “Does the Structure Matter? An External Validation and Health Economic Results Comparison of Event Simulation Approaches in Severe Obesity” was just published in the latest issue (Sep. 2022) of *PharmacoEconomics*. Previously we had presented this research at the HTAi congress in Utrecht (OP44).

This research identifies that in a severely obese population, the structure of a health economic model matters if clinical events are to be predicted most accurately. However, if the purpose of a health economic model is purely the incremental cost-effectiveness ratio, this study suggests that the structure does not matter that much, as incremental health economic results are fairly comparable. Further similar studies in other obese populations and in other disease areas would be needed to confirm the findings. These findings are of great value for health economists and decision makers, as they highlight the strength and weaknesses of current obesity models related to the event prediction, but provide confidence in **the incremental cost-effectiveness outcomes, that were fairly comparable between the approaches.**

The European Journal of Health Economics
<https://doi.org/10.1007/s10198-022-01498-y>

ORIGINAL PAPER



Estimating loss in capability wellbeing in the first year of the COVID-19 pandemic: a cross-sectional study of the general adult population in the UK, Australia and the Netherlands

Paul Mark Mitchell¹ · Rachael L. Morton² · Mickaël Hiligsmann³ · Samantha Husbands¹ · Joanna Coast¹

Dr. Mickaël Hiligsmann co-authored a paper [Estimating the loss in capability wellbeing in the first year of the COVID-19 pandemic in the UK, Australia and the Netherlands](#) published in the *European Journal of Health Economics*. The project was done in collaboration with the Universities of Bristol and Sydney, and was funded by the World Universities Network.

In years 2021-2022, **Dr. Charlotte Beudart** and **Dr. Mickaël Hiligsmann** (post-doctoral researcher) worked in collaboration with Radius Health and published a study on US patients perspective and preferences for transdermal system therapy for osteoporosis treatment. US patients with osteoporosis included in three focus groups identified efficacy, safety, cost, and convenience as important attributes of treatment when choosing between anabolic therapies with high stated preference for the solid Microstructured Transdermal System. Ref of the study: Charlotte Beudart, Stuart Silverman, Deborah T Gold, Setareh A Williams, Rich Weiss, Mickaël Hiligsmann. [A Qualitative Study to Assess US Patient Preferences between new Transdermal System and Injectable Anabolic Therapies for Osteoporosis Treatment.](#) Arch Osteoporos. 2022 Apr 4;17(1):57.

Archives of Osteoporosis (2022) 17:57
https://doi.org/10.1007/s11657-022-01075-z

ORIGINAL ARTICLE

A Qualitative Study to Assess US Patient Preferences between new Transdermal System and Injectable Anabolic Therapies for Osteoporosis Treatment

Charlotte Beudart¹ · Stuart Silverman^{2,3} · Deborah T. Gold⁴ · Setareh A. Williams⁵ · Rich Weiss⁵ · Mickaël Hiligsmann¹

Dr. Brigitte Essers was a member of the research team that performed a study to generate [a value set for the youth version of the EQ-5D-3L](#). The results of this study are published in PharmacoEconomics.

PharmacoEconomics
https://doi.org/10.1007/s40273-022-01192-0

ORIGINAL RESEARCH ARTICLE

A Value Set for the EQ-5D-Y-3L in the Netherlands

Bram Roudijk¹ · Ayesha Sajjad² · Brigitte Essers³ · Stefan Lipman² · Peep Stalmeler⁴ · Aureliano Paolo Finch¹

Accepted: 5 September 2022
© The Author(s) 2022



OTHERS

- **Dr. Charlotte Beudart** (post-doctoral researched) obtained in August 2022 a role of Academic Editor in Plos One.
- **Dr. Brigitte Essers** has joined the ZonMw commission that evaluates research grants for the programme “Goed Gebruik Geneesmiddelen”.

WORKSHOPS & COURSES

Are you also interested in decision modelling in R software?

At the end of August, **Isabell Wiethoff** (PhD candidate at the department for Health Services research) and **Dr. Mickaël Hiligsmann** (Associate Professor of Health Economics and Health Technology Assessment) and participated in the course “Cost-Effectiveness and Decision Modeling using R” of the DARTH (Decision Analysis in R for Technologies in Health) working group. Over the time span of three days, the course discussed the theory of different modelling techniques such as decision trees, state transition models, microsimulation models and sensitivity analyses and provided a mixture of practical exercises to understand the corresponding code within R. The course has not only equipped participants with useful tools to facilitate the start of own modelling projects, it has also highlighted the numerous possibilities of R and its importance in decision modelling.



Now available - Online and self-learning course:

“An introduction into health technology assessment and economic evaluations”



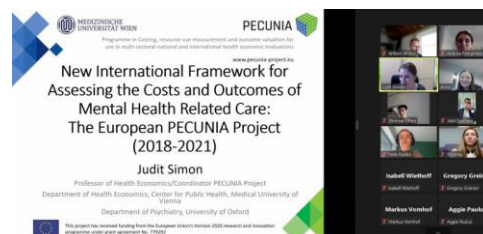
Given the increasing importance of health technology assessment (HTA) in decision making, a self-learning HTA course was developed by **Isabell Wiethoff**, **Dr. Mickaël Hiligsmann** and **Prof. Silvia Evers** from the department of Health Services Research (HSR). The course is targeting students and health professionals with limited pre-knowledge on health economic related topics and provides a comprehensive overview of the relevance of HTA with a special focus on economic evaluations. Overall, eleven pre-recorded video lectures are available in which the methodology, results and uncertainty analyses

of economic evaluations are addressed and explained. Next to the video lectures, the course entails practical examples, further reading tips and small exercises to test the understanding of the topics.

The course was developed for the “DOUBLE DOSE of energy and efforts of the national DOSIS consortium to design and test new diagnostic and treatment strategies for inherited cardiomyopathies consortium and funded by the Dutch Heart Foundation and Stichting Hartedroom. The corresponding videos are accessible via the Maastricht HETA website under the section “Self-learning course” (<https://www.maastrichtuniversity.nl/maastrichteta/self-learning-course>). .

PAST MAASTRICHT HETA / ISPOR-SC ACTIVITIES

- June 23rd, Thursday 9.00-13.00. Host: Nele Raskin**
Health economics/HTA PhD day - Presenting research and getting feedback. Several researchers presented their research.
- September 15th, Thursday 13.00-14.00 (online)**
Guest speaker: Prof Judit Simon
(Medical University of Vienna)
Host: Anne Kleijburg
Online lecture about the “New International Framework for Assessing the Costs and Outcomes of Mental Health Related Care: The European PECUNIA Project (2018-2021)”.
- October 10th, Tuesday 9.00-10.00 (on campus)**
Journal club – Host: Andrea Fernández Covés
Discussed paper: Broadening the application of health technology assessment in the Netherlands: a worthwhile destination but not an easy ride?
- October 14th, Thursday 13.00-14.30 (online) Seminar: Working as health economists – Host: Mickaël Hiligsmann**
In this session we invited Mata Charokopou, Head of Global Payer Strategy for Value, UCB, Belgium and Melinda Goodall, Director of HTA policy, MSD, UK to share their insights and practical experience about their work in the health economic field. This session was also part of the course Economics of Healthcare in the Master in Health Policy, Innovation and Management coordinated by Dr. Mickaël Hiligsmann.



Broadening the application of health technology assessment in the Netherlands: a worthwhile destination but not an easy ride?

Joost J. Enzing^{1,2*}, Saskia Knies^{1,2}, Bert Boer¹ and Werner B.F. Brouwer¹

¹Erasmus School of Health Policy & Management, Erasmus University Rotterdam, Rotterdam, The Netherlands and

²Zorginstituut Nederland, Diemen, The Netherlands

*Corresponding author. Email: enzing@eshpm.eur.nl

(Received 19 April 2019; revised 6 April 2020; accepted 4 July 2020)

UPCOMING MAASTRICHT HETA/ ISPOR-SC ACTIVITIES

- November 15th, Tuesday 9.00 - 12.00 (on campus)
Workshop in R software (#2): trial-based economic evaluation
- “November 28th , Monday 16.00 - 17.00 (online)
Seminar by Prof Don Husereau (University of Ottawa)”
- December 6th, Tuesday 9.00 - 12.00 (hybrid)
Bi-annual Health economics/HTA PhD day - Presenting research and getting feedback
- December 15th, Thursday 16:00 - 18.00 (Maastricht Christmas Market)
MaastrichtHETA End-of-year Glühwein meetup

LIST OF PUBLICATIONS

Health promotion policies for elderly: Some comparisons across Germany, Italy, the Netherlands and Poland

Arsenijevic, J. & Groot, W., Jan 2022, In: Health Policy. 126, 1, p. 69-73 5 p.

The Analysis of Predictors of Retirement Preferences over Time

Pilipiec, P., Groot, W. & Pavlova, M., Jun 2022, In: Journal of Population Ageing. 15, 2, p. 425-452 28 p.

Evaluating Health Related Quality of Life in Older People at Risk of Osteoporotic Fracture: A Head-to-Head Comparison of the EQ-5D-5L and AQoL-6D

Si, L., Tu, L., Xie, Y., Chen, G., Hiligsmann, M., Yang, M., Zhang, Y., Zhang, X., Jiang, Y., Wei, Q., Gu, J. & Palmer, A. J., Apr 2022, In: Social Indicators Research. 160, 2-3, p. 809-824 16 p.

Identifying Unmet Care Needs and Important Treatment Attributes in the Management of Hidradenitis Suppurativa: A Qualitative Interview Study

Willems, D., Hiligsmann, M., van der Zee, H. H., Sayed, C. J. & Evers, S. M. A. A., Mar 2022, In: The Patient: patient-centered outcomes research. 15, 2, p. 207-218 12 p.

The economic burden of obesity in Italy: a cost-of-illness study

d'Errico, M., Pavlova, M. & Spandonaro, F., Mar 2022, In: European Journal of Health Economics. 23, 2, p. 177-192 16 p.

The ICECAP-A instrument for capabilities: assessment of construct validity and test-retest reliability in a general Dutch population

Rohrbach, P. J., Dingemans, A. E., Essers, B. A., Van Furth, E. F., Spinhoven, P., Groothuis-Oudshoorn, C. G. M., Van Til, J. A. & Van den Akker-Van Marle, M. E., Mar 2022, In: Quality of Life Research. 31, 3, p. 687-696 10 p.

Assessing Policy Challenges and Strategies Supporting Informal Caregivers in the European Union

Wieczorek, E., Evers, S., Kocot, E., Sowada, C. & Pavlova, M., 2 Jan 2022, In: Journal of Aging & Social Policy. 34, 1, p. 145-160 16 p.

Societal costs of subclinical depressive symptoms in Dutch adolescents: a cost-of-illness study

Bodden, D. H. M., van den Heuvel, M. W. H., Engels, R. C. M. E. & Dirksen, C. D., Jul 2022, In: Journal of Child Psychology and Psychiatry. 63, 7, p. 771-780 10 p.



Assessment of Quality of Life 8-Dimension (AQoL-8D): translation, validation, and application in two Dutch trials in patients with epilepsy and schizophrenia

Chan, H. Y., Wijnen, B. M., Hiligsmann, M., Smit, F., Leenen, L. A. M., Majoie, M. H. J. M. & Evers, S. M. A. A., 4 Jul 2022, In: Expert Review of Pharmacoeconomics & Outcomes Research. 22, 5, p. 795-803 9 p.

The estimation of a preference-based single index for the IBS-QoL by mapping to the EQ-5D-5L in patients with irritable bowel syndrome

Sturkenboom, R., Keszthelyi, D., Brandts, L., Weerts, Z. Z. R. M., Snijkers, J. T. W., Masclee, A. A. M. & Essers, B. A. B., Apr 2022, In: Quality of Life Research. 31, 4, p. 1209-1221 13 p.

Patients' preferences for quality-of-life aspects in sarcopenia: a best-worst scaling study

Geerinck, A., Locquet, M., Hiligsmann, M., Reginster, J. Y., Bruyere, O. & Beaudart, C., Apr 2022, In: European Geriatric Medicine. 13, 2, p. 483-491 9 p.

Daily Life and Challenges Faced By Households With Permanent Childhood Developmental Disability in Rural Tanzania - A Qualitative Study

Castellani, J., Kimbute, O., Makasi, C., Mrango, Z. E., Paulus, A. T. G., Evers, S. M. A. A., Hardy, P., Sumner, T., Keiya, A., Mihaylova, B., Abul Faiz, M. & Gomes, M., Jun 2022, In: Journal of Developmental and Physical Disabilities. 34, 3, p. 471-490 20 p.

Health-related quality of life of patients with a recent fracture attending a fracture liaison service: a 3-year follow-up study

Li, N., van Oostwaard, M., van den Bergh, J. P., Hiligsmann, M., Boonen, A., van Kuijk, S. M. J., Vranken, L., Bours, S. P. G. & Wyers, C. E., Mar 2022, In: Osteoporosis International. 33, 3, p. 577-588 12 p.

Pharmacists' preferences for the provision of services to improve medication adherence among patients with diabetes in Indonesia: Results of a discrete choice experiment

Presley, B., Groot, W. & Pavlova, M., Jan 2022, In: Health & Social Care in the Community. 30, 1, p. E161-E174 14 p.

The Economic and societal burden of multiple sclerosis on lebanese society: a cost-of-illness and quality of life study protocol

Dahham, J., Rizk, R., Hiligsmann, M., Daccache, C., Khoury, S. J., Darwish, H., Evers, S. & Kremer, I., 4 Jul 2022, In: Expert Review of Pharmacoeconomics & Outcomes Research. 22, 5, p. 869-876 8 p.

Treatment preferences for medication or surgery in patients with deep endometriosis and bowel involvement - a discrete choice experiment

Metzemaekers, J., Van den Akker-van Marle, M. E., Sampat, J., Smeets, M. J. G. H., English, J., Thijs, E., Maas, J. W. M., Jansen, F. W. & Essers, B., Jul 2022, In: Bjog-an International Journal of Obstetrics and Gynaecology. 129, 8, p. 1376-1385 10 p.

Economic evaluation of deep brain stimulation compared with vagus nerve stimulation and usual care for patients with refractory epilepsy: A lifetime decision analytic model

Chan, H. Y., Wijnen, B. F. M., Majoie, M. H. J. M., Evers, S. M. A. A. & Hiligsmann, M., Mar 2022, In: Epilepsia. 63, 3, p. 641-651 11 p.

Identification and Prioritization of Attributes for a Discrete Choice Experiment Using the Nominal Group Technique: Patients' Choice of Public Health Facilities in Cape Town, South Africa

Chiwire, P., Evers, S. M., Mahomed, H. & Hiligsmann, M., Jan 2022, In: Value in Health Regional Issues. 27, p. 90-98 9 p.

Burden of disease study of overweight and obesity; the societal impact in terms of cost-of-illness and health-related quality of life

Hecker, J., Freijer, K., Hiligsmann, M. & Evers, S. M. A. A., 7 Jan 2022, In: BMC Public Health. 22, 1, 13 p., 46.

Control in the Hospital by Extensive Clinical rules for Unplanned hospitalizations in older Patients (CHECKUP); study design of a multicentre randomized study

Linkens, A. E. M. J. H., Milosevic, V., van Nie, N., Zwietering, A., de Leeuw, P. W., van den Akker, M., Schols, J. M. G. A., Evers, S. M. A. A., Gonzalvo, C. M., Winkens, B., van de Loo, B. P. A., de Wolf, L., Peeters, L., de Ree, M., Spaetgens, B., Hurkens, K. P. G. M. & van der Kuy, H. M., 10 Jan 2022, In: BMC Geriatrics. 22, 1, 8 p., 36.

A randomized crossover study of functional electrical stimulation during walking in spastic cerebral palsy: the FES on participation (FESPa) trial

Moll, I., Marcellis, R. G. J., Coenen, M. L. P., Fleuren, S. M., Willems, P. J. B., Speth, L. A. W. M., Witlox, M. A., Meijer, K. & Vermeulen, R. J., 13 Jan 2022, In: BMC Pediatrics. 22, 1, 15 p., 37.

Therapeutic Drug Monitoring-Guided Adjuvant Tamoxifen Dosing in Patients with Early Breast Cancer: A Cost-Effectiveness Analysis from the Prospective TOTAM Trial

Braal, C. L., Kleijburg, A., Jager, A., Koolen, S. L. W., Mathijssen, R. H. J., Ramos, I. C., Wetzelaer, P. & Uyl-de Groot, C. A., Feb 2022, In: Clinical Drug Investigation. 42, 2, p. 163-175 13 p.

The economic burden of the postoperative management in surgically treated trauma patients with peri-and/or intra-articular fractures of the lower extremities: A prospective multicenter cohort study

Kalmet, P. H. S., Andriessen, M. T., Maduro, C. V., van den Boom, N., Moens-Oyen, C. P. A., Hiligsmann, M., Janzing, H., van der Veen, A., Jaspars, C., Sintenie, J. B., Seelen, H. A. M., Brink, P. R. G., Poeze, M. & Evers, S., Feb 2022, In: Injury-International Journal of the Care of the Injured. 53, 2, p. 713-718 6 p.

Finding the way forward: COVID-19 vaccination progress in Germany, Austria and Switzerland

Desson, Z., Kauer, L., Otten, T., Peters, J. W. & Paolucci, F., Jun 2022, In: Health Policy and Technology. 11, 2, 10 p., 100584.

Patient preferences for lifestyle behaviours in osteoporotic fracture prevention: a cross-European discrete choice experiment

Beudart, C., Boonen, A., Li, N., Bours, S., Goemaere, S., Reginster, J. Y., Roux, C., McGowan, B., Diez-Perez, A., Rizzoli, R., Cooper, C. & Hiligsmann, M., Jun 2022, In: Osteoporosis International. 33, 6, p. 1335-1346 12 p.

The ICEpop Capability Measure for Adults Instrument for Capabilities: Development of a Tariff for the Dutch General Population

Rohrbach, P. J., Dingemans, A. E., Groothuis-Oudshoorn, C. G. M., Van Til, J. A., Essers, B. A., Van Furth, E. F. & Van den Akker-Van Marle, M. E., 1 Jan 2022, In: Value in Health. 25, 1, p. 125-132 8 p.

Process Evaluation of Lumbar Interbody Fusion Surgeries in Five Dutch Hospitals: A Qualitative Analysis

Droeghaag, R., Caelers, I. J. M. H., Paulus, A. T. G., van Hemert, W. L. W., van Santbrink, H. & LIFT Study Group, 1 Jan 2022, In: Medicina-Lithuania. 58, 1, 12 p., 99.

Enhancing Public Participation in Public Health Offerings: Patient Preferences for Facilities in the Western Cape Province Using a Discrete Choice Experiment

Chiwire, P., Beudart, C., Evers, S. M., Mahomed, H. & Hiligsmann, M., 1 Jan 2022, In: International Journal of Environmental Research and Public Health. 19, 1, 26 p., 590.

Costs of an Alcohol Measurement Intervention in Three Latin American Countries

Solovei, A., Manthey, J., Anderson, P., Mercken, L., Llopis, E. J., Rey, G. N., Gomez, A. P., Trujillo, J. M., Bustamante, I., Piazza, M., de Leon, A. P., Arroyo, M., de Vries, H., Rehm, J. & Evers, S., 1 Jan 2022, In: International Journal of Environmental Research and Public Health. 19, 2, 19 p., 700.

Economic evaluations in fracture research an introduction with examples of foot fractures

van den Boom, N. A. C., van den Hurk, A. A., Kalmet, P. H. S., Poeze, M. & Evers, S. M. A. A., Mar 2022, In: Injury-International Journal of the Care of the Injured. 53, 3, p. 895-903 9 p.

The Impact of Amyloid PET Disclosure on Quality of Life in Patients With Young Onset Dementia

van der Doelen, D. M., Handels, R. L. H., Zwan, M. D., van Kuijk, S. M. J., Pelkmans, W., Bouwman, F. H., Scheltens, P., Dirksen, C. D. & Verhey, F. R. J., 25 Feb 2022, In: *Alzheimer Disease & Associated Disorders*. 36, 1, p. 1-6 6 p.

Optimising Access Surgery in Senior Haemodialysis Patients (OASIS): study protocol for a multicentre randomised controlled trial

Heggen, B. D., Ramspek, C. L., van der Bogt, K. E. A., de Haan, M. W., Hemmelder, M. H., Hiligsmann, M. J. C., van Loon, M. M., Rotmans, J. I., Tordoir, J. H. M., Dekker, F. W., Schurink, G. W. H., Snoeijs, M. G. J. & OASIS study group, 3 Feb 2022, In: *BMJ Open*. 12, 2, 9 p., 053108.

Patient Preference for Optical Coherence Tomography versus Punch Biopsy as Diagnostic Strategy for Diagnosis of Basal Cell Carcinoma: A Labelled Discrete Choice Experiment

Adan, F., Mosterd, K., Wolswijk, T., Kelleners-Smeets, N. W. J. & Essers, B. A. B., May 2022, In: *Acta Dermato-Venereologica*. 102, 2 p., adv00638.

Discrete choice experiment to investigate preferences for incentives to promote antimicrobial research and development

Rohde, L., Mossialos, E., Beaudart, C., Joos, A., Heikkinen, I., Holland, S. & Hiligsmann, M., Jun 2022, In: *Journal of Global Antimicrobial Resistance*. 29, p. 42-48 7 p.

Parental preferences for seizure detection devices: A discrete choice experiment

van Westrhenen, A., Wijnen, B. F. M. & Thijs, R. D., May 2022, In: *Epilepsia*. 63, 5, p. 1152-1163 12 p.

Ophthalmologists' attitudes toward immediate sequential bilateral cataract surgery: Dutch national survey

Spekreijse, L. S., Veldhuizen, C. A., Henry, Y. P., van den Biggelaar, F. J. H. M., Dirksen, C. D. & Nuijts, R. M. M. A., Sep 2022, In: *Journal of Cataract and Refractive Surgery*. 48, 9, p. 1044-1049 6 p.

A Qualitative Study to Assess US Patient Preferences between new Transdermal System and Injectable Anabolic Therapies for Osteoporosis Treatment

Beaudart, C., Silverman, S., Gold, D. T., Williams, S. A., Weiss, R. & Hiligsmann, M., 4 Apr 2022, In: *Archives of Osteoporosis*. 17, 1, 23 p., 57.

A discrete choice experiment investigating HIV testing preferences in South Africa

Chiwire, P., Mühlbacher, A. C., Evers, S. M., Mahomed, H., Ostermann, J. & Hiligsmann, M., 23 Mar 2022, In: *Journal of Medical Economics*. 25, 1, p. 481-490 10 p.

Adaptation of the protein translational apparatus during ATDC5 chondrogenic differentiation

Steinbusch, M. M. F., van den Akker, G. G. H., Cremers, A., Witlox, A. M. A., Staal, H. M., Peffers, M. J., van Rhijn, L. W., Caron, M. M. J. & Welting, T. J. M., Jun 2022, In: *Non-Coding rna research*. 7, 2, p. 55-65 11 p.

In Search for Comparability: The PECUNIA Reference Unit Costs for Health and Social Care Services in Europe

Mayer, S., Berger, M., Konnopka, A., Brodszky, V., Evers, S. M. A. A., Hakkaart-van Roijen, L., Guitérrez-Colosia, M. R., Salvador-Carulla, L., Park, A-L., Hollingworth, W., García-Pérez, L., Simon, J. & On Behalf Of The Pecunia Group, 16 Mar 2022, In: *International Journal of Environmental Research and Public Health*. 19, 6, 15 p., 3500.

Patients' and Psychologists' Preferences for Feedback Reports on Expected Mental Health Treatment Outcomes: A Discrete-Choice Experiment

Hilhorst, L., Stappen, J. V. D., Lokkerbol, J., Hiligsmann, M., Risseeuw, A. H. & Tiemens, B. G., Sep 2022, In: *Administration and Policy in Mental Health and Mental Health Services Research*. 49, 5, p. 707-721 15 p.

Effectiveness and cost-effectiveness of dynamic bracing versus standard care alone in patients suffering from osteoporotic vertebral compression fractures: protocol for a multicentre, two-armed, parallel-group randomised controlled trial with 12 months of follow-up

Weber, A., Huysmans, S. M. D., van Kuijk, S. M. J., Evers, S. M. A. A., Jutten, E. M. C., Senden, R., Paulus, A. T. G., van den Bergh, J. P. W., de Bie, R. A., Merk, J. M. R., Bours, S. P. G., Hulsbosch, M., Janssen, E. R. C., Curfs, I., van Hemert, W. L. W., Schotanus, M. G. M., de Baat, P., Schepel, N. C., den Boer, W. A., Hendriks, J. G. E., & 6 othersLiu, W-Y., Kleuver, M. D., Pouw, M. H., van Hooff, M. L., Jacobs, E. & Willems, P. C. P. H., 24 May 2022, In: *BMJ Open*. 12, 5, 11 p., 054315.

Key Care Provision Aspects That Affect Care Transition in the Long-Term Care Systems: Preliminary Review Findings

Wieczorek, E., Kocot, E., Evers, S., Sowada, C. & Pavlova, M., 24 May 2022, In: *International Journal of Environmental Research and Public Health*. 19, 11, 10 p., 6402.

The perception of health care quality by primary health care managers in Ukraine

Anufriyeva, V., Pavlova, M., Stepurko, T. & Groot, W., 10 Jul 2022, In: *BMC Health Services Research*. 22, 1, 11 p., 895.

Integrated Maternal Care Strategies in Low- and Middle-Income Countries: A Systematic Review

van der Werf, L., Evers, S., Prieto-Pinto, L., Samacá-Samacá, D. & Paulus, A., 12 Jul 2022, In: *International Journal of Integrated Care*. 22, 2, 14 p., 26.

Does the Structure Matter? An External Validation and Health Economic Results Comparison of Event Simulation Approaches in Severe Obesity

Schwander, B., Kaier, K., Hiligsmann, M., Evers, S. & Nuijten, M., Sep 2022, In: *Pharmacoeconomics*. 40, 9, p. 901-915 15 p.

Is it time to consider population screening for fracture risk in postmenopausal women? A position paper from the International Osteoporosis Foundation Epidemiology/Quality of Life Working Group

Chotiyarnwong, P., McCloskey, E. V., Harvey, N. C., Lorentzon, M., Prieto-Alhambra, D., Abrahamsen, B., Adachi, J. D., Borgstrom, F., Bruyere, O., Carey, J. J., Clark, P., Cooper, C., Curtis, E. M., Dennison, E., Diaz-Curiel, M., Dimai, H. P., Grigorie, D., Hiligsmann, M., Khashayar, P., Lewiecki, E. M., & 10 othersLips, P., Lorenc, R. S., Ortolani, S., Papaioannou, A., Silverman, S., Sosa, M., Szulc, P., Ward, K. A., Yoshimura, N. & Kanis, J. A., 1 Dec 2022, In: *Archives of Osteoporosis*. 17, 1, 24 p., 87.

Effects of an Explicit Value Clarification Method With Computer-Tailored Advice on the Effectiveness of a Web-Based Smoking Cessation Decision Aid: Findings From a Randomized Controlled Trial

Gültzow, T., Smit, E. S., Crutzen, R., Jolani, S., Hoving, C. & Dirksen, C. D., 15 Jul 2022, In: *Journal of Medical Internet Research*. 24, 7, e34246.

Treatment of centered developmental dysplasia of the hip under the age of 1 year: an evidence-based clinical practice guideline - Part 1

van Bergen, C. J. A., de Witte, P. B., Willeboordse, F., de Geest, B. L., Foreman-van Drongelen, M. M. H. P., Burger, B. J., den Hartog, Y. D., van Linge, J. H., Pereboom, R. M., Robben, S. G. F., Witlox, M. A. & Witbreuk, M. M. E. H., 1 Jul 2022, In: *EFORT Open Reviews*. 7, 7, p. 498-505 8 p.

A realist evaluation to identify targets to improve the organization of compression therapy for deep venous thrombosis- and chronic venous disease patients

Schreurs, R. H. P., Joore, M. A., De Bruijn-Geraets, D. P., Ten Cate, H. & Ten Cate-Hoek, A. J., 2022, In: *PLOS ONE*. 17, 8, 15 p., e0272566.

Incorporating value-based healthcare projects in residency training: a mixed-methods study on the impact of participation on understanding and competency development

Vaassen, S., Essers, B. A. B., Stammen, L. A., Walsh, K., Kerssens, M., Evers, S. M. A. A., Heyligers, I., Stassen, L. P. S., van Mook, W. N. K. A. & Noben, C. Y. G., 17 Aug 2022, In: *BMJ Open*. 12, 8, 8 p., e060682.

Research protocol: Cervical Arthroplasty Cost Effectiveness Study (CACES): economic evaluation of anterior cervical discectomy with arthroplasty (ACDA) versus anterior cervical discectomy with fusion (ACDF) in the surgical treatment of cervical degenerative disc disease - a randomized controlled trial

Schuermans, V. N. E., Smeets, A. Y. J. M., Boselie, T. F. M., Candel, M. J. J. M., Curfs, I., Evers, S. M. A. A. & Van Santbrink, H., 26 Aug 2022, In: *Trials*. 23, 1, 12 p., 715.

Teachers' preferences for online professional development: Evidence from a discrete choice experiment

Ansyari, M. F., Groot, W. & de Witte, K., 6 Sep 2022, In: *Teaching and Teacher Education*. 119, November, 103870.

Education funding and learning outcomes in Sub-Saharan Africa: A review of reviews

Hassan, E., Groot, W. & Volante, L., 2022, In: *International Journal of Educational Research Open*. 3

Estimating the Burden of Stroke: Two-Year Societal Costs and Generic Health-Related Quality of Life of the Restore4Stroke Cohort

van Mastrigt, G., van Heugten, C., Visser-Meily, A., Bremmers, L. & Evers, S., 5 Sep 2022, In: *International Journal of Environmental Research and Public Health*. 19, 17, 15 p., 11110.

Patient preferences for curettage followed by imiquimod 5% cream versus surgical excision for the treatment of non-facial nodular basal cell carcinoma: A discrete choice experiment

Sinx, K. A. E., Mosterd, K., de Coster, D. & Essers, B. A., Jan 2022, In: *Journal of the European Academy of Dermatology and Venereology*. 36, 1, p. E41-E43 3 p.

Tibia hemimelia in a patient with CHARGE syndrome: A rare but recurrent phenomenon

Aukema, S. M., de Geus, C. M., Robben, S. G. F., van Kaam, K. J. A. F., Staal, H. M., Witlox, A. M., de la Haye, N. A. J., Klaassens, M., Coumans, A., Stegmann, A. P. A., Paley, D. & Stumpel, C. T. R. M., Mar 2022, In: *American Journal of Medical Genetics Part A*. 188, 3, p. 1000-1004 5 p.

Cost-effectiveness of continuous versus intermittent chemotherapy for patients with HER2-negative advanced breast cancer

Claessens, A. K. M., Busschbach, J. J. V., Ramaekers, B. L. T., Erdkamp, F. L. G., Bouma, J. M., van Leeuwen-Stok, A. E., Tjan-Heijnen, V. C. G., Bos, M. E. M. M. & Dutch Breast Cancer Research Group (BOOG), 4 May 2022, In: *Acta Oncologica*. 61, 5, p. 619-624 6 p.