

Guidelines for UM students: Effective and responsible use of Large Language Models in Problem-Based Learning environments

Five tips and examples for individual learning

1 Simplification

Tip: Use LLMs to break down complex theories into more manageable themes. The LLM can provide clear explanations and analogies that make abstract ideas more concrete and understandable.

Example: Request the LLM to generate visual aids, such as diagrams or real-time examples, to help understand difficult and abstract concepts.



2 Critical thinking

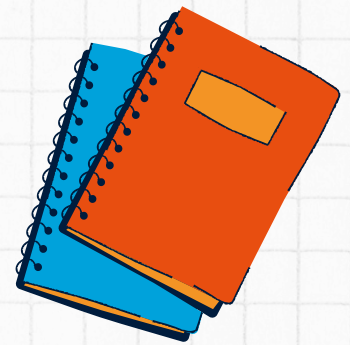
Tip: Use LLMs to generate challenging questions and scenarios that require critical thinking.

Example: Prompt the LLM: "In a professional setting, how could this scenario occur?"

3 Personalised study schedule

Tip: Create a detailed study plan with the help of LLMs.

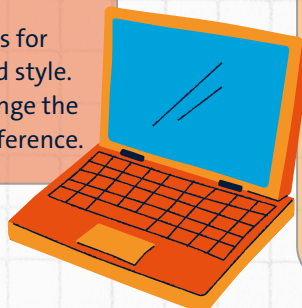
Example: Enter your learning goals and timeframe into the LLM to receive a week-by-week study schedule tailored to your needs (pace and understanding), including specific chapters to read, videos to watch, and assignments to complete.



4 Enhance language skills

Tip: Use the LLM to improve your writing by asking it to flag ungrammatical or cumbersome sentences.

Example: Submit essays to the LLMs for feedback on grammar, coherence, and style. You could also prompt the LLM to change the tone or style of the writing to your preference.



5 Simulate exam conditions

Tip: Use LLMs to create mock exams and practice questions that mimic real assessment conditions.

Example: Ask LLMs to generate a set of practice questions based on summary of a topic or past exams, allowing you to simulate a real exam environment and test your knowledge.

This document provides tips to improve your study practices at UM with the help of LLMs. Please be aware that presenting ideas, arguments, and words, generated by AI, as your own without proper citation will be considered fraud. When in doubt about what is and is not allowed with respect to using LLMs in your education, please ask your tutor/course coordinator and/or check the recent faculty rules on the use of GenAI in education.



Need help and ideas prompting LLMs?
Scan **this** QR code to check out the UM Prompt Library!

Five tips for using LLMs for collaborative learning

1 Enhance brainstorming

Tip: Use LLMs to offer initial prompts and identify areas of interest, which can help your group in formulating learning goals when needed, for example, if you encounter difficulties.

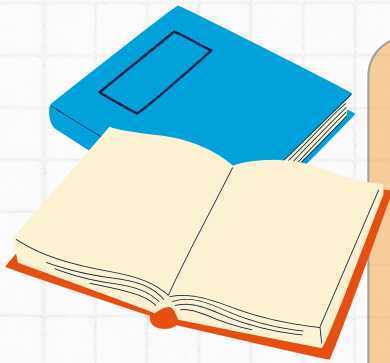
Example: Input your group's main problem statement into the LLM and ask for potential subtopics and questions to explore. Ask the LLM to play the Devil's advocate which can help in debating about the topic



2 Retrieve information

Tip: LLMs can provide additional factual information and diverse viewpoints to aid in the group discussions.

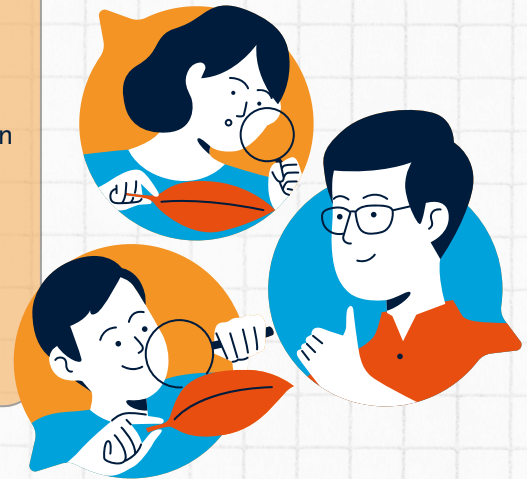
Example: During a tutorial, use an LLM to clarify complex concepts or to introduce new perspectives when the discussion slows down.



3 Change perspectives

Tip: LLMs can help you consider diverse perspectives and real-life applications, which can help you think critically about the task during discussion as well as sharpen your arguments.

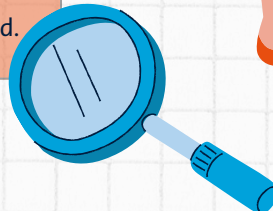
Example: Ask the LLMs for real-life examples related to your discussion topic and critically analyze these examples with your group.



4 Summarise discussions

Tip: LLMs can assist the scribe in generating comprehensive summaries and recommending additional resources to study.

Example: After a discussion, compare your understanding with an LLM-generated summary to ensure no key points are missed.



5 Facilitate role-based contributions

Tip: Use LLMs to assist each group member in their specific role (such as discussion leader, scribe, or researcher) to provide tailored support and resources.

Example: The scribe uses the LLM to generate notes, while the researcher gets help in finding relevant articles and summarising them for the group.

This document provides tips to improve your study practices at UM with the help of LLMs. Please be aware that presenting ideas, arguments, and words, generated by AI, as your own without proper citation will be considered fraud. When in doubt about what is and is not allowed with respect to using LLMs in your education, please ask your tutor/course coordinator and/or check the recent faculty rules on the use of GenAI in education.



Need help and ideas prompting LLMs?
Scan **this** QR code to check out the UM Prompt Library!