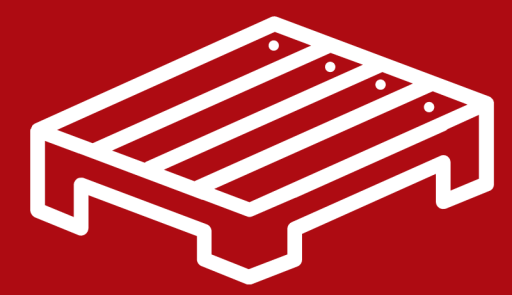


Trash it right!

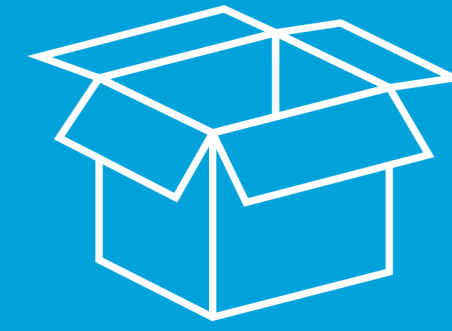


Large objects

- Metal objects
- Wooden pallets
- Furniture

Register large objects at Servicepoint-FS

Collection location:
Scan the QR-code



Paper

YES:

- Only clean, dry paper and cardboard
- Boxes: flat, made small

NO:

- Wet, greasy, plasticized or contaminated paper/cardboard, such as pizza boxes and tissues



PD

In the small PD waste bins:

YES:

- Empty plastic packaging and drink cartons (PD)

NO:

- Plastic (styro) foam, foils or products

In the PD wheelie bins only closed transparent bags with PD



Styrofoam

Clean styrofoam boxes without product residue

YES:

- EPS: usually white, breaks easily and crumbles into small balls.

NO:

- EPP/EPE resembles styrofoam, but does not break easily and does not crumble into small beads.

Collection location:
Scan the QR-code



Household glass

YES:

- Consumer packaging for food/drinks, drinking glasses

NO:

- Porcelain, ceramic, stone
- Flat glass (belongs to laboratory glass)



Batteries

Locations: In battery box at reception

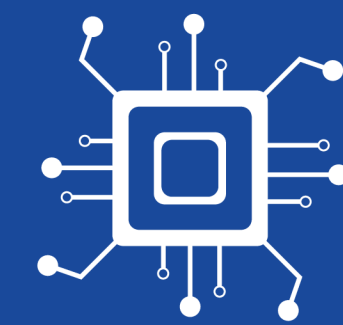
Register damaged lithium batteries at Servicepoint-FS



Confidential paper

In the closed blue wheelie bins:

Printing and writing paper only



IDEE / IE

FHML – register at IDEE:

- Equipment with IDEE-registration
- Other lab equipment

FPN - register at IE:

- Equipment with IE-registration
- Other lab equipment

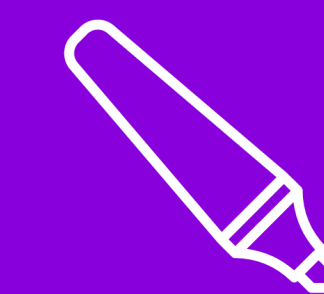


Electronic

Electrical equipment such as:

IT peripherals, kettles, coffee makers, microwaves, sandwich makers

Collection location:
Scan the QR-code



Small Chemical Waste

- Typex
- Nail polish (remover)
- Toner
- Oil/paint



Food scraps

For more information scan the QR code



Residual waste

Non-hazardous waste that does not fit into the other categories.

If in doubt, scan the QR code.



Scan the code to contact Servicepoint-FS, or mail to servicepoint-fs@maastrichtuniversity.nl



Scan the code for more information and an overview of the collection locations